

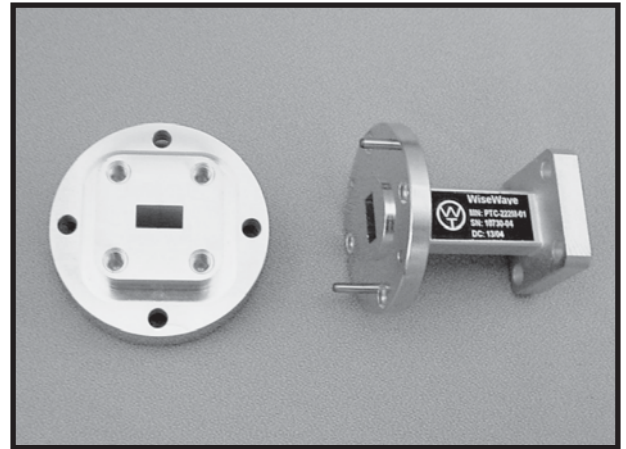
FEATURES

- ❖ Rugged waveguide configuration
- ❖ Full band operation
- ❖ High performance

APPLICATIONS

- ❖ Test benches
- ❖ Subsystems
- ❖ Prototypes
- ❖ Inter connections

DESCRIPTION



PWA & PWK Series

PWA series rectangular waveguide flange adapters are offered to cover frequency range of 18 to 110 GHz in seven waveguide bands. These adapters are used for connecting the same size rectangular waveguide with different flange patterns.

PWK series rectangular waveguide bulkhead flange amount adapters are offered to cover frequency range of 18 to 110 GHz in seven waveguide bands. These transitions are manufactured with EDM technique to ensure high mechanical tolerance and ruggedness. The transitions are used for waveguide interface in panel amount equipment.

HOW TO ORDER

Waveguide Flange Adapters

Specify Model Number

PWA – FG1 FG2 -XX ← Factory Reserve

Flange Type 1 Flange Type 2

Example: To order a UG383/U to UG599/U flange adapter, specify PWA-383599-XX.

Bulkhead Waveguide Adapters

Frequency Band	K	Ka	Q	U	V	E	W
Model Number	PWK-42-01	PWK-28-01	PWK-22-01	PWK-19-01	PWK-15-01	PWK-12-01	PWK-10-01
Freq. Range (GHz)	18-26.5	26.5-40	33-50	40-60	50-75	60-90	75-110
Waveguide Size	WR-42	WR-28	WR-22	WR-19	WR-15	WR-12	WR-10
Flange Type	UG595/U	UG599/U	UG383/U	UG383/U Mod	UG385/U	UG387/U	UG387/U Mod

WT-E-1

WAVEGUIDE W/FLANGE
4 PLS

WiseWave
MIN: XXXXX
S/N: XXXXX
D/C: XXXXX

BAND	L	H	A	H0
K	1.20	1.04	1.00	0.44
Ka	1.00	0.88	0.85	0.38
Q & U	1.40	1.27	1.16	0.57
V,E & W	1.00	0.88	0.80	0.38

4-40 x 0.25 DP
4 PLS

Dimensions are in inches

WT-E-2

WAVEGUIDE W/FLANGE
2 PLS

BAND	K	Ka	Q & U	V,E & W
L	Vary per Specifications			

Dimensions are in inches

WT-E-3

High Pass

WAVEGUIDE W/FLANGE
2 PLS

BAND	K	Ka	Q & U	V,E & W
L	3.00	2.60	2.20	1.80

Dimensions are in inches

WT-E-4

Low Pass

WAVEGUIDE W/FLANGE
2 PLS

BAND	K	Ka	Q & U	V,E & W
L	3.00	2.50	2.00	1.60

Dimensions are in inches

WT-E-5

COAXIAL CONNECTOR

WR-15 WAVEGUIDE
W/UG385/U FLANGE

BAND	X	WR-75	WR-62	K/WR-34	Ka,Q & U	V
L	1.40	1.25	1.20	0.85	1.00	1.05
L0	1.00	0.90	0.95	0.60	0.75	0.80

NOTES:
BOTH MALE AND FEMALE COAXIAL CONNECTORS ARE AVAILABLE FOR ALL BANDS

Dimensions are in inches

WT-E-6

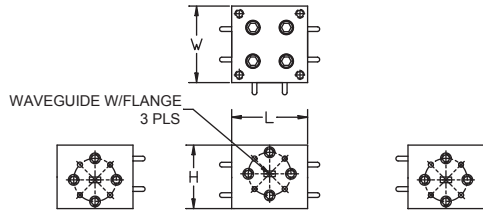
WAVEGUIDE W/FLANGE

PTW	BIGGER WAVEGUIDE BAND	K	Ka	Q	U	V	E
L		2.00	2.00	1.50	1.50	1.00	1.00

PRC	RECTANGULAR WG BAND	K	Ka	Q	U	V	E	W
L		2.00	1.50	1.30	1.30	1.10	1.10	1.10

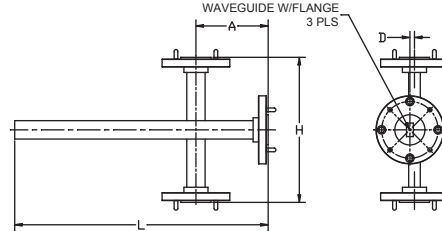
Dimensions are in inches

The flange pattern shown is for illustration purpose. Refer to Technical Reference Section for flange pattern details. The outline drawings shown are standard versions. Contact factory for your specific package requirements.

WT-E-7


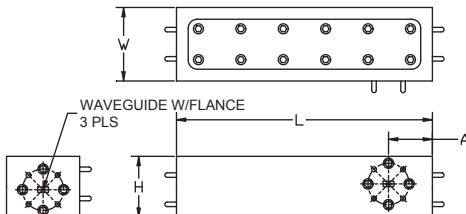
BAND	K	Ka	Q	U	V	E	W
L	1.20	1.00	1.30	1.30	1.00	1.00	1.00
W	1.20	1.00	1.30	1.30	1.00	1.00	1.00
H	1.06	0.90	1.25	1.23	0.83	0.82	0.81

Dimensions are in inches

WT-E-8


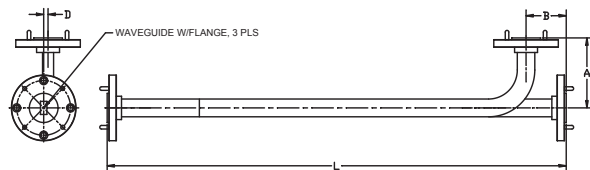
Band	X	WR-75	Ku	K	Ka	Q	U	V	E	W
L	5.46	4.80	4.66	4.24	3.46	3.26	2.66	2.56	2.56	2.46
A	1.73	1.65	1.58	1.52	1.23	1.23	0.98	0.98	0.98	0.98
D	0.45	0.43	0.35	0.21	0.18	0.15	0.13	0.11	0.10	0.09
H	3.46	3.30	3.16	3.04	2.46	2.46	1.96	1.96	1.96	1.96

Dimensions are in inches

WT-E-9


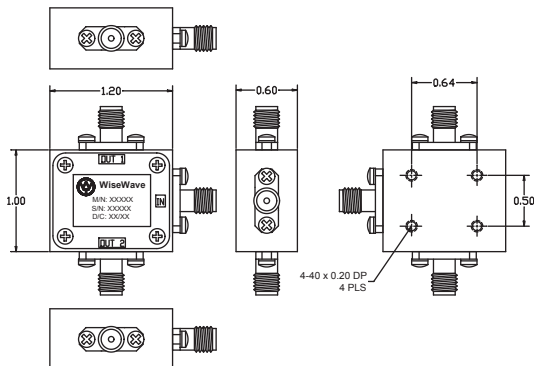
BAND	Q	U	V	E	W
L	5.50	5.50	3.50	3.50	3.50
W	1.30	1.30	1.00	1.00	1.00
H	1.25	1.23	0.83	0.82	0.81
A	0.80	0.80	0.60	0.60	0.60

Dimensions are in inches

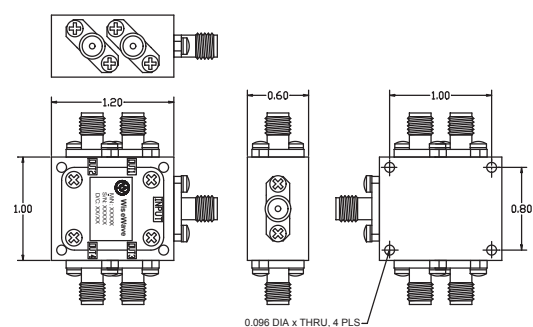
WT-E-10


Band	X	WR-75	Ku	K	Ka	Q	U	V	E	W
L	19.50	16.50	13.00	11.00	10.00	8.00	6.50	6.00	5.50	5.00
A	1.90	1.85	1.75	1.50	1.40	1.20	1.20	1.00	1.00	1.00
B	0.95	0.95	0.90	0.70	0.60	0.70	0.70	0.60	0.60	0.60
D	0.45	0.43	0.35	0.21	0.18	0.15	0.13	0.11	0.10	0.09

Dimensions are in inches

WT-E-11


Dimensions are in inches

WT-E-12


Dimensions are in inches

The flange pattern shown is for illustration purpose. Refer to Technical Reference Section for flange pattern details. The outline drawings shown are standard versions. Contact factory for your specific package requirements.