

**TOH SERIES  
MINIATURE SPDT SWITCH  
DC-2.5 GHz ◆ PIN, SMA**

**Click Here to  
Request Quote**



The **TOH Series** features Pin Mount or SMA connectors and a frequency range of DC to 2.5 GHz.

This series is available with fail-safe function.

**RF Impedance:** 50 ohms nominal  
**Temperature Range:** -35°C to +85°C ambient  
**Operating Life:** 1,000,000 cycles min.  
**Switching Time:** 20 mSec max.  
**Switching Sequence:** Break Before Make

**SPECIFICATIONS**

Frequency	VSWR (max.)	Insertion Loss (dB max.)	Isolation (dB min.)
DC-2.5 GHz - TOH54	1.30	0.25	40
DC-2.5 GHz - TOH55	1.20	0.15	40

Actuator Current (typical)	Actuator Current (typical)		
	12Vdc	20-24 Vdc	24-30 Vdc
Fail-safe	230mA	115mA	95mA

\* If reduced coil current is required, please contact Factory.

**AVAILABLE OPTIONS**

OPTION 2 RF CONNECTORS	OPTION 4 VOLTAGE	OPTION 5 ACTUATOR	OPTION 6 FREQUENCY
4 - SMA 7 - Pin Mount	1 - 6 Vdc +/- 10% 2 - 12 Vdc +/- 10% 3 - 24-30 Vdc 8 - 20-24 Vdc	<b>Fail-safe</b> A - Standard	1 - DC to 2.5 GHz
OPTION 3 TERMINALS			OPTION 7 POLARITY
1 - Solder Terminals 3 - Flying Leads			0 - Not Applicable

**TOH54  
TOH55** -

Option 1 Series	Option 2 RF Connectors	Option 3 Terminals	Option 4 Voltage	Option 5 Actuator	Option 6 Frequency	Option 7 Polarity
--------------------	---------------------------	-----------------------	---------------------	----------------------	-----------------------	----------------------

**TOH54**

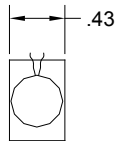
**DC TERMINAL FUNCTION**

	<b>FAIL-SAFE</b>
<b>PIN</b>	A
<b>Coil In 1</b>	1
<b>Coil In 2</b>	2

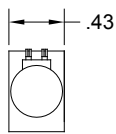
**SCHEMATICS**

	Pages 139-143
<b>FIG.</b>	37

**TOP VIEW**

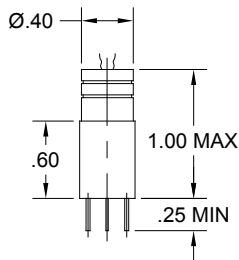


**Flying Leads**

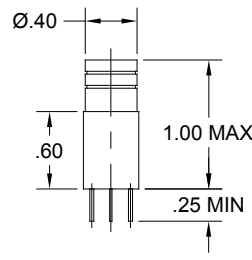


**Solder Terminals**

**FRONT VIEW**

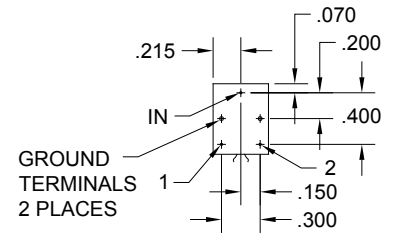


**Flying Leads**

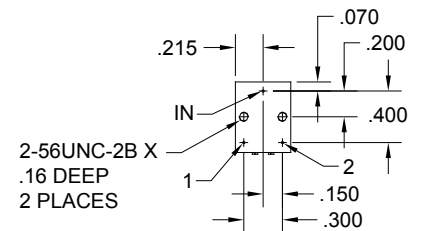


**Solder Terminals**

**BOTTOM VIEW**



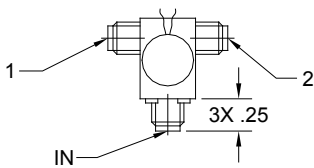
**Flying Leads**



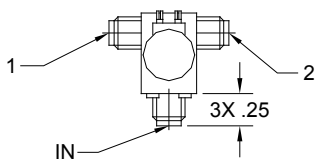
**Solder Terminals**

**TOH55**

**TOP VIEW**

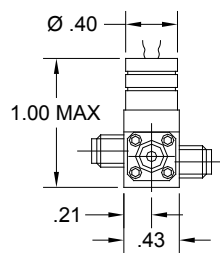


**Flying Leads**

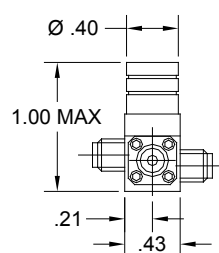


**Solder Terminals**

**FRONT VIEW**

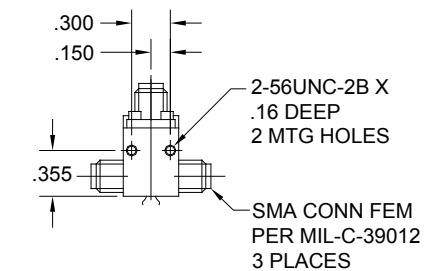


**Flying Leads**

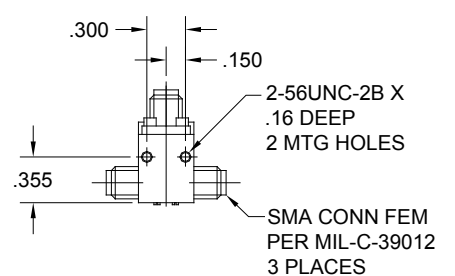


**Solder Terminals**

**BOTTOM VIEW**



**Flying Leads**



**Solder Terminals**