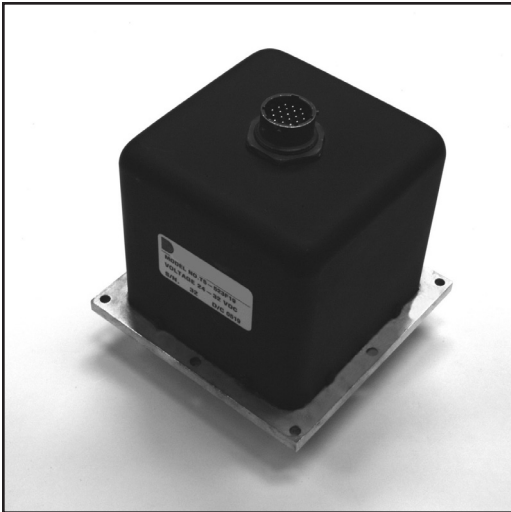


**T5 SERIES  
TRANSFER SWITCH  
DC- 6.5 GHz ◆ SC**

**Click Here to  
Request Quote**



The **T5 Series** features SC connectors and a frequency range of DC to 6.5 GHz.

This series is available with fail-safe, latching self cut-off or pulse latching functions.

|                            |  |
|----------------------------|--|
| <b>RF Impedance:</b>       | 50 ohms nominal  |
| <b>Temperature Range:</b>  | -35°C to +85°C ambient   |
| <b>Operating Life:</b>     | 1,000,000 cycles min.  |
| <b>Switching Time:</b>     | 15 mSec max.   |
| <b>Switching Sequence:</b> | Break Before Make  |
| <b>Environmental:</b>      | Designed in Accordance to MIL-DTL-3928 (Testing and Operation Modes) |

**SPECIFICATIONS**

| Frequency | VSWR (max.) | Insertion Loss (dB max.) | Isolation (dB min.) |
|-----------|-------------|--------------------------|---------------------|
| DC-1 GHz  | 1.15        | 0.15                     | 60                  |
| 1-3 GHz   | 1.35        | 0.35                     | 60                  |
| 3-6.5 GHz | 1.50        | 0.50                     | 60                  |

| Actuator Current (typical) | 12Vdc | 12-15 Vdc | 20-24 Vdc | 24-30Vdc |
|----------------------------|-------|-----------|-----------|----------|
| Failsafe                   | 480mA | 480mA     | 270mA     | 280mA    |
| Latching                   | 280mA | 280mA     | 270mA     | 220mA    |

\* If reduced coil current is required, please contact Factory.

**AVAILABLE OPTIONS**

| OPTION 2<br>RF CONNECTORS                | OPTION 4<br>VOLTAGE   | OPTION 5<br>ACTUATOR  | OPTION 6<br>FREQUENCY                    | OPTION 8<br>SPECIAL OPTIONS |   |
|--|---|---|--|-----------------------------|---|
| 5 - SC                                   | 1 - 6 Vdc +/- 10%<br>2 - 12 Vdc +/- 10%<br>3 - 24-30 Vdc<br>4 - 48 Vdc +/- 10%<br>5 - 110 Vac +/- 10% | <b>Failsafe</b>   |  | 2 - DC to 6.5 GHz           |   |
|  |   | A - Standard<br>M - Diodes  | B - Indicators<br>Q - Diodes, Indicators |                             | L - TTL (High)<br>LL - TTL (Low)<br>1 - Bracket<br>M - Manual Override<br>P - High Power Handling |
|  |   | <b>Latching Self Cut-Off</b>  |  |                             |   |
| <b>Pulse Latching</b>                    |   | 0 - Not Applicable<br>8 - Positive Common<br>9 - Negative Common                        |  |                             |   |
| D - Diodes<br>E - Diodes, Indicators     |   |   | <b>OPTION 7<br/>POLARITY</b>             |                             |   |
| C - Standard<br>Y - Diodes               |   |   |  | OPTION 3<br>TERMINALS       |   |
| F - Indicators<br>L - Diodes, Indicators |   | 1 - Solder Terminals<br>2 - Circular Connector<br>4 - Sub M miniature D-Shell Connector |  |                             |   |

**T5**

-

**5**

**2**

Option 1  
Series

Option 2  
RF Connectors

Option 3  
Terminals

Option 4  
Voltage

Option 5  
Actuator

Option 6  
Frequency

Option 7  
Polarity

Option 8  
Special  
Options

High quality microwave and millimeter wave components and subsystems. Visit Ducommun RF Products online at [www.ducommun.com](http://www.ducommun.com) or contact us at 310.513.7200. All specifications are subject to change without notice.

**DC TERMINAL FUNCTION**

| PIN | FAILSAFE |     |                |     |     |                |        | LATCHING       |        |             |        |             |        |                |
|-----|----------|-----|----------------|-----|-----|----------------|--------|----------------|--------|-------------|--------|-------------|--------|----------------|
|     | A        | M   | A, M<br>w/ TTL | B   | Q   | B, Q<br>w/ TTL | C, Y   | C, Y<br>w/ TTL | D      | D<br>w/ TTL | E      | E<br>w/ TTL | F, L   | F, L<br>w/ TTL |
| 1   | N/A      | N/A | N/A            | N/A | N/A | N/A            | N/A    | N/A            | N/A    | N/A         | N/A    | COM         | N/A    | COM            |
| 2   | N/A      | N/A | N/A            | N/A | N/A | N/A            | N/A    | N/A            | N/A    | N/A         | N/A    | 1           | N/A    | 1              |
| 3   | N/A      | N/A | N/A            | N/A | N/A | N/A            | N/A    | N/A            | N/A    | N/A         | N/A    | 2           | N/A    | 2              |
| 4   | N/A      | N/A | N/A            | N/A | N/A | +A             | N/A    | N/A            | N/A    | N/A         | COM    | N/A         | COM    | N/A            |
| 5   | N/A      | N/A | +A             | 1   | +1  | -B             | COM+/- | +A             | COM+/- | +A          | 1      | +A          | 1      | +A             |
| 6   | 1        | +1  | -B             | 2   | -2  | 2              | 1-/+   | -B             | 1-/+   | -B          | 2      | -B          | 2      | -B             |
| 7   | 2        | -2  | 2              | COM | COM | COM            | 2-/+   | 1              | 2-/+   | 1           | COM+/- | 1           | COM+/- | 1              |
| 8   | N/A      | N/A | N/A            | 1   | 1   | 1              | N/A    | 2              | N/A    | 2           | 1-/+   | 2           | 1-/+   | 2              |
| 9   | N/A      | N/A | N/A            | 2   | 2   | 2              | N/A    | N/A            | N/A    | N/A         | 2-/+   | N/A         | 2-/+   | N/A            |

**SCHEMATICS**

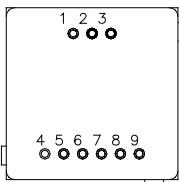
Pages 139-143

| FIG. | 7 | 7 | 8 | 7 | 7 | 8 | 13 | 14 | 13 | 14 | 13 | 14 | 19 | 20 |
|------|---|---|---|---|---|---|----|----|----|----|----|----|----|----|
|------|---|---|---|---|---|---|----|----|----|----|----|----|----|----|

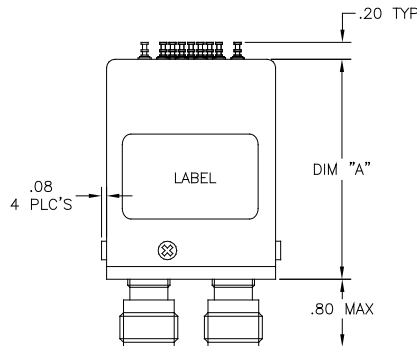
**OUTLINE DRAWING DIMENSION "A"**

|       |       |       |       |       |       |       |       |       |       |       |       |       |       |       |
|-------|-------|-------|-------|-------|-------|-------|-------|-------|-------|-------|-------|-------|-------|-------|
| 2.15" | 2.15" | 2.60" | 2.40" | 2.40" | 2.60" | 2.15" | 2.15" | 2.15" | 2.15" | 2.15" | 2.15" | 2.15" | 2.15" | 2.15" |
|-------|-------|-------|-------|-------|-------|-------|-------|-------|-------|-------|-------|-------|-------|-------|

**TOP VIEW**



**FRONT VIEW**



**BOTTOM VIEW**

