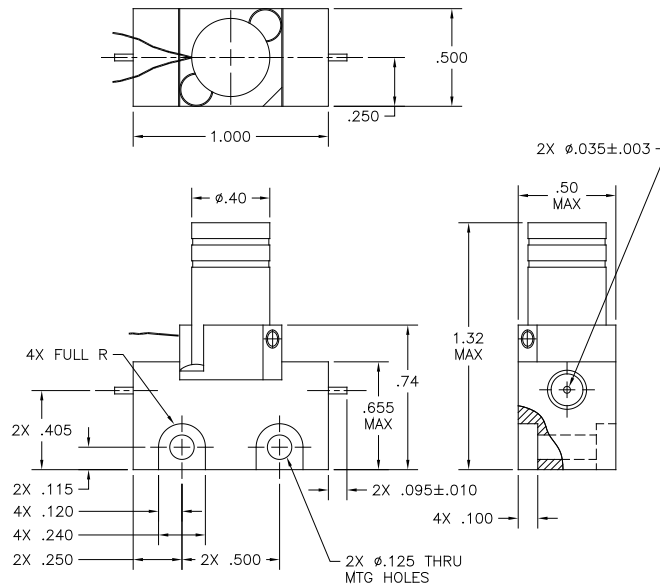


The **RA Series** features compact, lightweight, surface mount, hot switching at a frequency of DC to 3 GHz.

**Weight:** 0.5oz  
**RF Impedance:** 50 ohms nominal  
**Temperature Range:** -35°C to +85°C ambient  
**Operating Life:** 1,000,000 cycles min.  
**Switching Time:** 12 mSec max.  
**Switching Sequence:** Break Before Make  
**Environmental:** Desinged to meet Mil-DTL-3928


**SPECIFICATIONS**

Frequency	VSWR (max.)	Insertion Loss (dB max.)	Isolation (dB min.)	Power Handling
DC-3 GHz	1.20	0.20	80	80 w cw

Actuator Current (typical)	24-30Vdc
Normally Open	87mA

**AVAILABLE OPTIONS**

OPTION 2 RF CONNECTORS		OPTION 4 VOLTAGE		OPTION 5 ACTUATOR		OPTION 6 FREQUENCY	
7 - Special - PIN		3 - 24-30 Vdc		Normally Open		1 - DC to 3 GHz	
				K - Standard			
<b>OPTION 3 TERMINALS</b>						<b>OPTION 7 POLARITY</b>	
0 - Flying Leads						0 - Not Applicable	

**RA**    -    **7**    **0**    **3**    **K**    **1**    **0**  
 Option 1 Series    Option 2    Option 3 Terminals    Option 4 Voltage    Option 5 Actuator    Option 6 Frequency    Option 7 Polarity