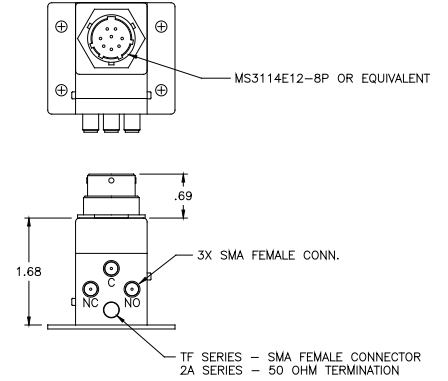


PIN	FAILSAFE		LATCHING	
	SPDT TRANSFER	SPDT TRANSFER (Logic Input)	SPDT TRANSFER	SPDT TRANSFER (Logic Input)
1	V SW; +V SW	+V SW	C+/-	+V SW
2	V SW; -V SW	N/A	Position 1 -/+	C RTN
3	COM	C RTN	Position 2 -/+	Logic Input 1
4	Ind NC	Logic Input	Ind COM	Logic Input 2
5	Ind NO	COM	Ind Position 1	Ind COM
6	N/A	Ind NC	Ind Position 2	Ind Position 1
7	N/A	Ind NO	N/A	Ind Position 2
8	N/A	N/A	N/A	N/A

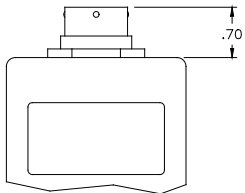
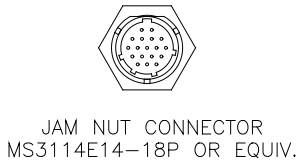
SPDT Series: 2A, 2AE, 2B, 2BE, 2C, 2CE

Transfer Series: TA, TAE, TD, TDE, TF, TFE, TN, TNH, TT



ALL DIMENSIONS NOT SHOWN CAN BE FOUND ON THE 2A/2AE OR TF/TFE DATA SHEET

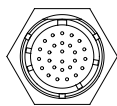
2A/2AE SWITCH
TF/TFE SWITCH



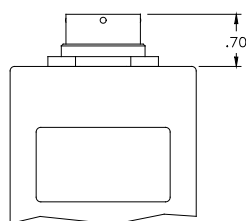
PIN	FAILSAFE		NORMALLY OPEN	
	SP3T - SP6T w/ INDICATORS	SP3T - SP6T w/ INDICATORS (Logic Input)	SP3T - SP6T w/ INDICATORS	SP3T - SP6T w/ INDICATORS (Logic Input)
A	V SW; +V SW; -V SW	+V SW	V SW; +V SW; -V SW	+V SW
B	N/A	N/A	Position 1	N/A
C	Position 2	C RTN	Position 2	C RTN
D	Position 3	N/A or B C D 1	Position 3	Logic or B C D 1
E	Position 4	Logic or B C D 2	Position 4	Logic or B C D 2
F	Position 5	Logic 3 or B C D 4	Position 5	Logic 3 or B C D 4
G	Position 6	Logic 4 or B C D 8	Position 6	Logic 4 or B C D 8
H	Ind COM	Logic Input 5	Ind COM	Logic Input 5
J	Ind FS	Logic Input 6	Ind Position 1	Logic Input 6

SP3T - SP6T Series: SS, SSE, ST, SN, SNH, IT, ITE

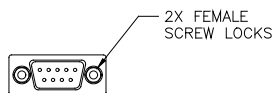
PIN	FAILSAFE		NORMALLY OPEN	
	SP3T - SP6T w/ INDICATORS	SP3T - SP6T w/ INDICATORS (Logic Input)	SP3T - SP6T w/ INDICATORS	SP3T - SP6T w/o INDICATORS (Logic Input)
K	Ind Position 2	Ind COM	Ind Position 2	Ind COM
L	Ind Position 3	Ind FS	Ind Position 3	Ind Position 1
M	Ind Position 4	Ind Position 2	Ind Position 4	Ind Position 2
N	Ind Position 5	Ind Position 3	Ind Position 5	Ind Position 3
P	Ind Position 6	Ind Position 4	Ind Position 6	Ind Position 4
R	N/A	Ind Position 5	N/A	Ind Position 5
S	N/A	Ind Position 6	N/A	Ind Position 6
T	N/A	N/A	N/A	N/A
U	N/A	N/A	N/A	N/A



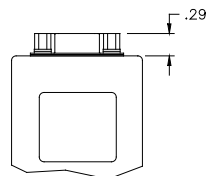
JAM NUT CONNECTOR
MS3114E16-26P OR EQUIV.



PIN	FAILSAFE		NORMALLY OPEN		PIN	FAILSAFE		NORMALLY OPEN	
	SP7T - SP10T w/ INDICATORS	SP7T - SP10T w/ INDICATORS (Logic Input)	SP7T - SP10T w/ INDICATORS	SP7T - SP10T w/ INDICATORS (Logic Input)		SP7T - SP10T w/o INDICATORS	SP7T - SP10T w/ INDICATORS (Logic Input)	SP7T - SP10T w/ INDICATORS	SP7T - SP10T w/ INDICATORS (Logic Input)
A	V SW; +V SW; -V SW	+V SW	V SW; +V SW; -V SW	+V SW	P	Ind Position 2	Ind COM	Ind Position 2	Ind COM
B	N/A	N/A	Position 1	N/A	R	Ind Position 3	Ind FS	Ind Position 3	Ind Position 1
C	Position 2	C RTN	Position 2	C RTN	S	Ind Position 4	Ind Position 2	Ind Position 4	Ind Position 2
D	Position 3	N/A or B C D 1	Position 3	Logic or B C D 1	T	Ind Position 5	Ind Position 3	Ind Position 5	Ind Position 3
E	Position 4	Logic or B C D 2	Position 4	Logic or B C D 2	U	Ind Position 6	Ind Position 4	Ind Position 6	Ind Position 4
F	Position 5	Logic 3 or B C D 4	Position 5	Logic 3 or B C D 4	V	Ind Position 7	Ind Position 5	Ind Position 7	Ind Position 5
G	Position 6	Logic 4 or B C D 8	Position 6	Logic 4 or B C D 8	W	Ind Position 8	Ind Position 6	Ind Position 8	Ind Position 6
H	Position 7	Logic 5	Position 7	Logic 5	X	Ind Position 9	Ind Position 7	Ind Position 9	Ind Position 7
J	Position 8	Logic 6	Position 8	Logic 6	Y	Ind Position 10	Ind Position 8	Ind Position 10	Ind Position 8
K	Position 9	Logic 7	Position 9	Logic 7	Z	N/A	Ind Position 9	N/A	Ind Position 9
L	Position 10	Logic 8	Position 10	Logic 8	a	N/A	Ind Position 10	N/A	Ind Position 10
M	Ind COM	Logic 9	Ind COM	Logic 9	b	N/A	N/A	N/A	N/A
N	Ind FS	Logic 10	Ind Position 1	Logic 10	c	N/A	N/A	N/A	N/A



SUB MINIATURE D-SHELL 9P

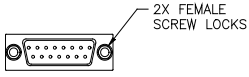


PIN	FAILSAFE				LATCHING			NORMALLY OPEN	
	SPDT TRANSFER	SPDT TRANSFER (Logic Input)	SP3T - SP6T w/o INDICATORS	SP3T - SP6T w/o INDICATORS (Logic Input)	SPDT 2R Series (Logic Input)	SPDT TRANSFER	SPDT TRANSFER (Logic Input)	SP3T - SP6T w/o INDICATORS	SP3T - SP6T w/o INDICATORS (Logic Input)
1	V SW; +V SW	+V SW	V SW; +V SW; -V SW	+V SW	+V SW	C+/-	+V SW	V SW; +V SW; -V SW	+V SW
2	V SW; -V SW	N/A	N/A	C RTN	+5 Vdc	Position 1 -/+	C RTN	Position 1	C RTN
3	Ind COM	C RTN	Position 2	N/A or B C D 1	CRTN	Position 2 -/+	Logic Input 1	Position 2	Logic or B C D 1
4	Ind NC	Logic Input	Position 3	Logic or B C D 2	Logic	Ind COM	Logic Input 2	Position 3	Logic or B C D 2
5	Ind NO	Ind COM	Position 4	Logic 3 or B C D 4	Ind COM	Ind Position 1	Ind COM	Position 4	Logic 3 or B C D 4
6	N/A	Ind NC	Position 5	Logic 4 or B C D 8	Ind Position 1	Ind Position 2	Ind Position 1	Position 5	Logic 4 or B C D 8
7	N/A	Ind NO	Position 6	Logic 5	Ind Position 2	N/A	Ind Position 2	Position 6	Logic 5
8	N/A	N/A	N/A	Logic 6	N/A	N/A	N/A	N/A	Logic 6
9	N/A	N/A	N/A	N/A	N/A	N/A	N/A	N/A	N/A

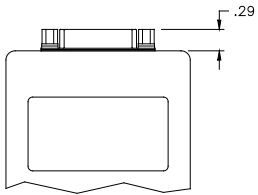
SPDT Series: 2S, 2SE, 2R, 2RE, 2T, 2N, 2NH, 2B, 2BE, 2C, 2CE

Transfer Series: TA, TAE, TD, TDE, TS, TSE, TT, TN, TNH

SP3T - SP6T Series: SS, SSE, ST, SN, SNH, IT, ITE



2X FEMALE SCREW LOCKS
SUB MINIATURE D-SHELL 15P

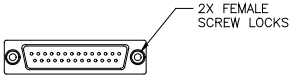


PIN	FAILSAFE		NORMALLY OPEN/LATCHING	
	SP3T - SP6T w/ INDICATORS	SP3T - SP6T w/ INDICATORS (Logic Input)	SP3T - SP6T w/ INDICATORS	SP3T - SP6T w/ INDICATORS (Logic Input)
1	V SW; +V SW; -V SW	+V SW	V SW; +V SW; -V SW	+V SW
2	N/A	C RTN	Position 1	C RTN
3	Position 2	N/A or B C D 1	Position 2	Logic or B C D 1
4	Position 3	Logic or B C D 2	Position 3	Logic or C D 2 B
5	Position 4	Logic 3 or B C D 4	Position 4	Logic 3 or B C D 4
6	Position 5	Logic 4 or B C D 8	Position 5	Logic 4 or B C D 8
7	Position 6	Logic 5	Position 6	Logic 5
8	Ind COM	Logic 6	Ind COM	Logic 6
9	Ind FS	Ind COM	Ind Position 1	Ind COM
10	Ind Position 2	Ind FS	Ind Position 2	Ind Position 1
11	Ind Position 3	Ind Position 2	Ind Position 3	Ind Position 2
12	Ind Position 4	Ind Position 3	Ind Position 4	Ind Position 3
13	Ind Position 5	Ind Position 4	Ind Position 5	Ind Position 4
14	Ind Position 6	Ind Position 5	Ind Position 6	Ind Position 5
15	N/A	Ind Position 6	N/A	Ind Position 6

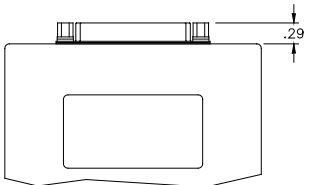
SP3T - SP6T Series: IT, ITE, SN, SNH, ST

PIN	FAILSAFE		NORMALLY OPEN/LATCHING	
	SP7T - SP10T w/o INDICATORS	SP7T - SP10T w/o INDICATORS (Logic Input)	SP7T - SP10T w/o INDICATORS	SP7T - SP10T w/o INDICATORS (Logic Input)
1	V SW; +V SW; -V SW	+V SW	V SW; +V SW; -V SW	+V SW
2	N/A	C RTN	Position 1	C RTN
3	Position 2	N/A or C D 1 B	Position 2	Logic or B C D 1
4	Position 3	Logic or B C D 2	Position 3	Logic or B C D 2
5	Position 4	Logic 3 or B C D 4	Position 4	Logic 3 or B C D 4
6	Position 5	Logic 4 or B C D 8	Position 5	Logic 4 or B C D 8
7	Position 6	Logic 5	Position 6	Logic 5
8	Position 7	Logic 6	Position 7	Logic 6
9	Position 8	Logic 7	Position 8	Logic 7
10	Position 9	Logic 8	Position 9	Logic 8
11	Position 10	Logic 9	Position 10	Logic 9
12	N/A	Logic 10	N/A	Logic 10
13	N/A	N/A	N/A	N/A
14	N/A	N/A	N/A	N/A
15	N/A	N/A	N/A	N/A

SP7T - SP10T Series: ES, HS, HN, HT



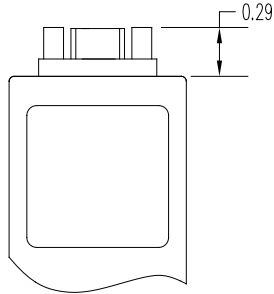
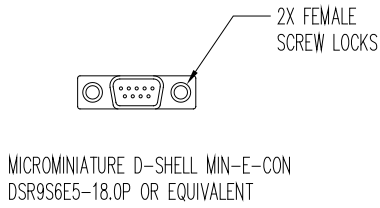
2X FEMALE SCREW LOCKS
SUB MINIATURE D-SHELL 25P



PIN	FAILSAFE		NORMALLY OPEN	
	SP7T - SP10T w/ INDICATORS	SP7T - SP10T w/ INDICATORS (Logic Input)	SP7T - SP10T w/ INDICATORS	SP7T - SP10T w/ INDICATORS (Logic Input)
1	V SW; +V SW; -V SW	+V SW	V SW; +V SW; -V SW	+V SW
2	N/A	C RTN	Position 1	C RTN
3	Position 2	N/A or C D 1 B	Position 2	Logic or B C D 1
4	Position 3	Logic or C D 2 B	Position 3	Logic or B C D 2
5	Position 4	Logic 3 or B C D 4	Position 4	Logic 3 or B C D 4
6	Position 5	Logic 4 or B C D 8	Position 5	Logic 4 or B C D 8
7	Position 6	Logic 5	Position 6	Logic 5
8	Position 7	Logic 6	Position 7	Logic 6
9	Position 8	Logic 7	Position 8	Logic 7
10	Position 9	Logic 8	Position 9	Logic 8
11	Position 10	Logic 9	Position 10	Logic 9
12	Ind COM	Logic 10	Ind COM	Logic 10
13	Ind FS	Ind COM	Ind Position 1	Ind COM

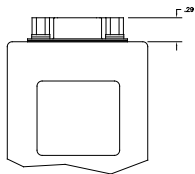
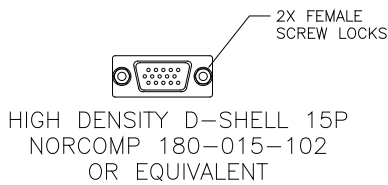
SP7T - SP10T Series: ES, HS, HN, HT

PIN	FAILSAFE		NORMALLY OPEN	
	SP7T - SP10T w/ INDICATORS	SP7T - SP10T w/ INDICATORS (Logic Input)	SP7T - SP10T w/ INDICATORS	SP7T - SP10T w/ INDICATORS (Logic Input)
14	Ind Position 2	Ind Position FS	Ind Position 2	Ind Position 1
15	Ind Position 3	Ind Position 2	Ind Position 3	Ind Position 2
16	Ind Position 4	Ind Position 3	Ind Position 4	Ind Position 3
17	Ind Position 5	Ind Position 4	Ind Position 5	Ind Position 4
18	Ind Position 6	Ind Position 5	Ind Position 6	Ind Position 5
19	Ind Position 7	Ind Position 6	Ind Position 7	Ind Position 6
20	Ind Position 8	Ind Position 7	Ind Position 8	Ind Position 7
21	Ind Position 9	Ind Position 8	Ind Position 9	Ind Position 8
22	Ind Position 10	Ind Position 9	Ind Position 10	Ind Position 9
23	N/A	Ind Position 10	N/A	Ind Position 10
24	N/A	N/A	N/A	N/A
25	N/A	N/A	N/A	N/A



FAILSAFE NORMALLY OPEN	
PIN	SP3T - SP6T w/o INDICATORS
1	V SW; +V SW; -V SW
2	Position 1
3	Position 2
4	Position 3
5	Position 4
6	Position 5
7	Position 6
8	N/A
9	N/A

SP3T - SP6T Series: SM



PIN	FAILSAFE		NORMALLY OPEN	
	SP3T - SP6T w/ INDICATORS	SP3T - SP6T w/ INDICATORS (Logic Input)	SP3T - SP6T w/ INDICATORS	SP3T - SP6T w/ INDICATORS (Logic Input)
1	V SW, +V SW, -V SW	V SW	V SW, +V SW, -V SW	V SW
2	N/A	C RTN	Position 1	C RTN
3	Position 2	N/A or BCD 1	Position 2	Logic or BCD 1
4	Position 3	Logic or BCD 2	Position 3	Logic or BCD 2
5	Position 4	Logic or BCD 3	Position 4	Logic or BCD 3
6	Position 5	Logic or BCD 4	Position 5	Logic or BCD 4
7	Position 6	Logic 5	Position 6	Logic 5
8	Ind COM	Logic 6	Ind COM	Logic 6
9	Ind FS	Ind COM	Ind Position 1	Ind COM
10	Ind Position 2	Ind FS	Ind Position 2	Ind Position 1
11	Ind Position 3	Ind Position 2	Ind Position 3	Ind Position 2
12	Ind Position 4	Ind Position 3	Ind Position 4	Ind Position 3
13	Ind Position 5	Ind Position 4	Ind Position 5	Ind Position 4
14	Ind Position 6	Ind Position 5	Ind Position 6	Ind Position 5
15	N/A	Ind Position 6	N/A	Ind Position 6

SP3T - SP6T Series: SS