

**D2 SERIES  
SPDT SWITCH  
DC-12.4 GHz** ◆ N, BNC, TNC

**Click Here to  
Request Quote**



The **D2 Series** features N, BNC or TNC connectors and a frequency range of DC to 12.4 GHz.

This series is available with fail-safe, latching self cut-off or pulse latching functions.

<b>RF Impedance:</b>	50 ohms nominal
<b>Temperature Range:</b>	-35°C to +85°C ambient
<b>Operating Life:</b>	1,000,000 cycles min.
<b>Switching Time:</b>	15 mSec max.
<b>Switching Sequence:</b>	Break Before Make
<b>Environmental:</b>	Designed in Accordance to MIL-DTL-3928 (Testing and Operation Modes)

**AVAILABLE OPTIONS**

OPTION 2 RF CONNECTORS	OPTION 4 VOLTAGE	OPTION 5 ACTUATOR	OPTION 6 FREQUENCY	OPTION 8 SPECIAL OPTIONS														
1 - N 2 - BNC 3 - TNC	1 - 6 Vdc +/- 10% 2 - 12 Vdc +/- 10% 3 - 24-30 Vdc 4 - 48 Vdc +/- 10% 5 - 110 Vac +/- 10% 6 - 12-15 Vdc 7 - 18-20 Vdc 8 - 20-24 Vdc	<p style="text-align: center;"><b>Fail-safe</b></p> <table border="0"> <tr> <td>A - Standard</td> <td>B - Indicators</td> </tr> <tr> <td>M - Diodes</td> <td>Q - Diodes, Indicators</td> </tr> </table> <p style="text-align: center;"><b>Latching Self Cut-Off</b></p> <table border="0"> <tr> <td>D - Diodes</td> <td>E - Diodes, Indicators</td> </tr> </table> <p style="text-align: center;"><b>Pulse Latching</b></p> <table border="0"> <tr> <td>C - Standard</td> <td>F - Indicators</td> </tr> <tr> <td>Y - Diodes</td> <td>L - Diodes, Indicators</td> </tr> </table> <p style="text-align: center;"><b>Normally Open</b></p> <table border="0"> <tr> <td>K - Standard</td> <td>H - Indicators</td> </tr> <tr> <td>J - Diodes</td> <td>G - Diodes, Indicators</td> </tr> </table>	A - Standard	B - Indicators	M - Diodes	Q - Diodes, Indicators	D - Diodes	E - Diodes, Indicators	C - Standard	F - Indicators	Y - Diodes	L - Diodes, Indicators	K - Standard	H - Indicators	J - Diodes	G - Diodes, Indicators	2 - DC to 12.4 GHz	L - TTL (High) LL - TTL (Low) P - High Power Handling
A - Standard	B - Indicators																	
M - Diodes	Q - Diodes, Indicators																	
D - Diodes	E - Diodes, Indicators																	
C - Standard	F - Indicators																	
Y - Diodes	L - Diodes, Indicators																	
K - Standard	H - Indicators																	
J - Diodes	G - Diodes, Indicators																	
OPTION 3 TERMINALS			OPTION 7 POLARITY															
1 - Solder Terminals 2 - Circular Connector 4 - Sub M miniature D-Shell Connector			0 - Not Applicable 8 - Positive Common 9 - Negative Common															

**D2**

-

**2**

Option 1  
Series

Option 2  
RF Connectors

Option 3  
Terminals

Option 4  
Voltage

Option 5  
Actuator

Option 6  
Frequency

Option 7  
Polarity

Option 8  
Special  
Options

**DC TERMINAL FUNCTION**

PIN	FAILSAFE							LATCHING							NORMALLY OPEN						
	A	M	A, M w/ TTL	B	Q	B, Q w/ TTL	C, Y	C, Y w/ TTL	D	D w/ TTL	E	E w/ TTL	F, L	F, L w/ TTL	J	K	J, K w/ TTL	G	H	G, H w/ TTL	
1	1	+1	+A	COM	COM	COM	COM+/-	+A	COM+/-	+A	COM	COM	COM	COM	COM+/-	COM	+A	COM	COM	COM	
2	N/A	N/A	N/A	1	1	1	N/A	-B	N/A	-B	1	1	1	1	N/A	N/A	-B	1	1	1	
3	N/A	N/A	N/A	2	2	2	N/A	N/A	N/A	N/A	2	2	2	2	N/A	N/A	N/A	2	2	2	
4	2	-2	-B	1	+1	+A	1-/+	1	1-/+	1	COM+/-	+A	COM+/-	+A	1-/+	1	1	COM+/-	COM	+A	
5	N/A	N/A	2	2	-2	-B	2-/+	2	2-/+	2	1-/+	-B	1-/+	-B	2-/+	2	2	1-/+	1	-B	
6	N/A	N/A	N/A	N/A	N/A	2	N/A	N/A	N/A	N/A	2-/+	1	2-/+	1	N/A	N/A	N/A	2-/+	2	1	
7	N/A	N/A	N/A	N/A	N/A	N/A	N/A	N/A	N/A	N/A	N/A	2	N/A	2	N/A	N/A	N/A	N/A	N/A	2	

**SCHEMATICS**

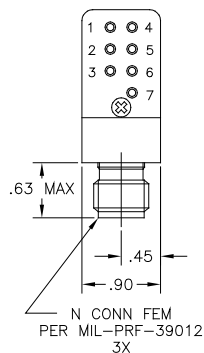
Pages 139-143

FIG.	1	1	2	1	1	2	15	16	9	10	9	10	15	16	21	21	22	21	21	22
------	---	---	---	---	---	---	----	----	---	----	---	----	----	----	----	----	----	----	----	----

**OUTLINE DRAWING DIMENSION "A"**

1.75"	1.75"	1.98"	1.75"	1.75"	1.98"	1.75"	1.98"	1.75"	1.98"	1.75"	1.98"	1.75"	1.98"	1.75"	1.75"	1.98"	1.75"	1.75"	1.98"
-------	-------	-------	-------	-------	-------	-------	-------	-------	-------	-------	-------	-------	-------	-------	-------	-------	-------	-------	-------

**SIDE VIEW**



**FRONT VIEW**

