

Click Here to Request Quote



The **2N Series** features N connectors and a frequency range of DC to 14 GHz.

The **2NH Series** features High Power N connectors and a frequency range of DC to 14 GHz.

Both series are available with fail-safe, latching self cut-off, or pulse latching functions.

Weight (max.):	8.5 oz
RF Impedance:	50 ohms nominal
Operating Temperature:	-55°C to +85°C ambient
Operating Life:	1,000,000 cycles min.
Switching Sequence:	Break Before Make

SPECIFICATIONS

Frequency	VSWR (max.)	Insertion Loss (dB max.)	Isolation (dB min.)
DC-2 GHz	1.15	0.20	80
2-4 GHz	1.20	0.25	80
4-14 GHz	1.50	0.50	60

Actuator Current (typical)	12Vdc	15 Vdc	24 Vdc	28Vdc
Fail-safe	270mA	215mA	135mA	130mA
Latching	200mA	155mA	100mA	95mA

* If reduced coil current is required, please contact Factory.

Position	NO	NC	Latching
Switching Time - mSec (Max)	20	50	20

AVAILABLE OPTIONS

OPTION 3 VOLTAGE	OPTION 4 ACTUATOR		OPTION 5 POLARITY
1 - 12 Vdc	Fail-safe		1 - Negative
2 - 28 Vdc	A - Standard	C - Indicators	2 - Positive
3 - 15 Vdc	B - Diodes	D - Diodes, Indicators	3 - Not Applicable
5 - Other	Pulse Latching		OPTION 6 TERMINALS
6 - 24 Vdc	Low Input Drivers with:	High Input Drivers with:	1 - Solder Terminals
7 - 5 Vdc	E - Diodes	EH - Diodes	3 - Other (Specify)
	F - Diodes, Indicators	FH - Diodes, Indicators	4 - Sub Miniature D-Shell Connector
	Latching Self Cut-Off		
	G - Diodes	H - Diodes, Indicators	
	Low Input Drivers with:	High Input Drivers with:	
	J - Diodes	JH - Diodes	
	K - Diodes, Indicators	KH - Diodes, Indicators	

ADDITIONAL OPTIONS

OPTION 7 STANDARD OPTIONS
1 - Moisture Seal
2 - High Temperature (125° C)
3 - Moisture Seal & High Temperature (125° C)
OPTION 8 BRACKETS
No Additional Brackets Offered
OPTION 9 BODIES
S - See Page 147

Please Note: Schematics may include optional Indicator Contacts. If your Actuator Option does not include Indicator Contacts, omit them from the schematic.

For "Additional Options" please contact Factory for part number

2N/2NH

Option 2 Series	Option 3 Voltage	Option 4 Actuator	Option 5 Polarity	Option 6 Terminals
------------------------	-------------------------	--------------------------	--------------------------	---------------------------

TOP VIEW



Actual markings will reflect terminal functions, not letter or number designation as shown above.

DC TERMINAL FUNCTIONS

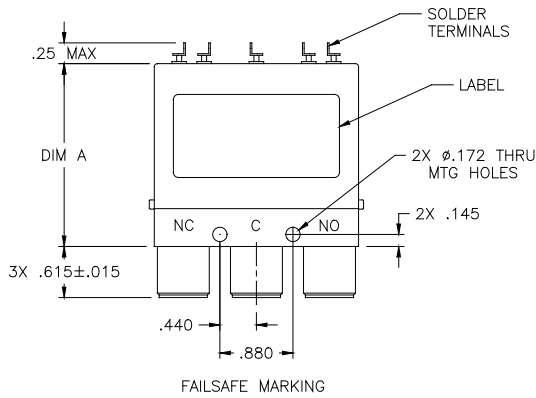
PIN	FAILSAFE				LATCHING	
	A, C	B, D	E, EH, F, FH,	G, H	J, JH, K, KH	T, U, V, W
1	N/A	N/A	N/A	N/A	+V SW	N/A
2	N/A	N/A	C RTN	C+/-	C RTN	C+/-
3	AV	AV-	L	AV 1-/+	L 1	PV 1-/+
4	AV	AV+	+V SW	AV 2-/+	L 2	PV 2-/+

SCHEMATICS

Pages 132-137

	S1, S2	S3	S4	S5	S6	S8, S9

FRONT VIEW



INDICATORS

PIN	A	B	C
	COM	1 or N/C	2 or N/O

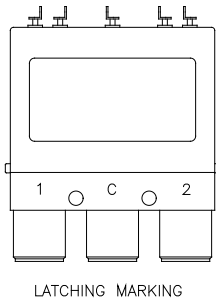
See Page 158 for Legend of Terms and Tolerances

See Page 138 for Logic & BCD Truth Table

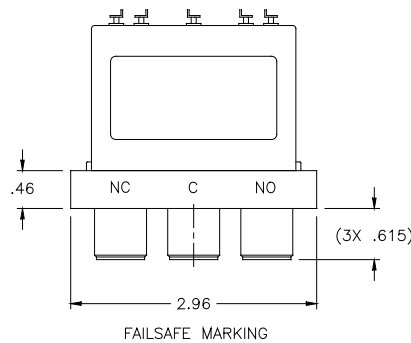
AVAILABLE OPTIONS*	OUTLINE DRAWING DIMENSION "A"
A, B, C, D	1.61
E, EH, F, FH	2.20
J, JH, K, KH	2.20
G, H, V, W	2.20
T, U	1.61

* Consult factory for Dimension "A" when multi pin connector is desired.

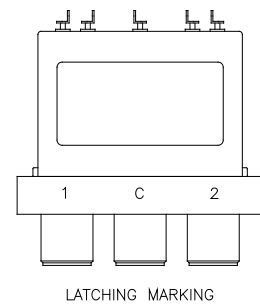
"S" BODY



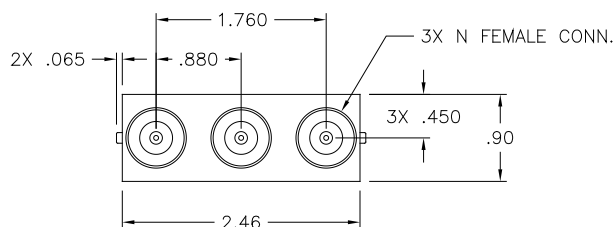
"S" BODY



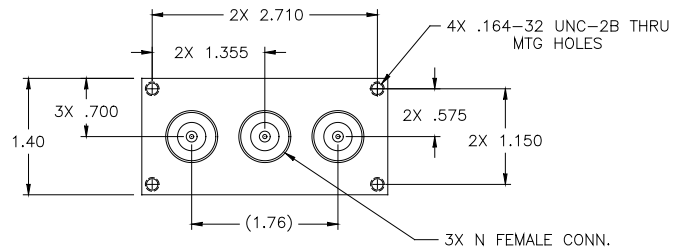
"S" BODY



BOTTOM VIEW



"S" BODY



2N/2NH SWITCH