

## Professional Engineering Services (PES)

General Services Administration Federal Supply Service  
Contract Number: GS-23F-0020K

### Miltec Corporation - Company Overview

Miltec Corporation was founded in April of 1997 and is headquartered in Huntsville, Alabama. Miltec provides extensive in-house engineering capabilities in all applicable areas related to defense/aerospace systems. These areas include, but are not limited to systems, aerodynamics, propulsion, guidance-navigation-and control (GNC), lethality/warheads, simulation, avionics, structures, software, IMUs, seeker/sensors, training and signal processing.

### Available Labor Categories

- Program Mgr/Deputy Prog Mgr
- Senior Contract Administrator
- Contract Administrator
- Junior Contract Administrator
- Defense Research Analyst 1
- Defense Research Analyst 2
- Defense Research Analyst 3
- Defense Research Analyst 4
- Defense Research Analyst 5
- Senior System Analyst
- System Analyst
- Journeyman Systems Analyst
- Entry Level Systems Analyst
- Principal Investigator
- Subject Matter Expert
- Task Order Manager/Project Lead
- Senior Technical Specialist
- Technical Specialist
- Entry Level Technical Specialist
- Senior Management/Technical Staff
- Management/Technical Staff
- Senior Management Analyst
- Management Analyst
- Junior Management Analyst
- Senior Program Consultant
- Program Consultant
- Journeyman Consultant
- Senior Analyst/Logistician/Prgr/Specialist
- Journeyman Analyst/Logistician/Prgr/Specialist
- Entry Level Analyst/Logistician/Prgr/Specialist
- Program Controls Specialist
- Principle Engineer/Scientist
- Senior Engineer/Scientist
- Engineer/Scientist
- Journeyman Engineer/Scientist
- Entry Level Engineer/Scientist
- COOP/Intern Engineer/Scientist
- Senior Graphic Artist/Tech Illust.
- Graphic Artist/Tech Illustrator
- Documentation Specialist
- Administrative Assistant
- Administrative Specialist
- General Clerk

### Customer Base

- U.S. Army
- U.S. Navy
- U.S. Air Force
- AMRDEC
- Space & Missile Defense Cmnd
- Missile Defense Agency
- Northrup Grumman
- ATK
- Boeing
- Lockheed Martin
- Jacobs
- Raytheon
- CSC
- Cobham
- CACI
- Universities

### Points of Contact

**Technical:** Mark Tcherneshoff (256) 428-1381 LTcherneshoff@one.ducommun.com

**Contractual:** Margaux Shamblin (256) 428-1209 MShamblin@one.ducommun.com

### Miltec Website: [www.ducommun.com/miltec](http://www.ducommun.com/miltec)

Online access to contract ordering information, terms and conditions, up-to-date pricing and the option to create an electronic delivery order is available through GSA Advantage, an internet menu-driven database system. The internet address for GSA Advantage is: <http://www.gsa.gov>



678 Discovery Drive  
Huntsville, Alabama 35806  
Phone: (256)428-1301  
Fax: (256)428-1461



# Professional Engineering Services

*GSA Schedule Information*



*Specializing in Missile Engineering and Aerospace Technologies*

## General Information

GSA has determined that the rates for services contained in the contractor's price list applicable to this schedule are fair and reasonable. However, the ordering office using this contract is responsible for considering the level of effort and mix of labor proposed to perform specific tasks being ordered and for making a determination that the total firm-fixed price or ceiling price is fair and reasonable. PES is a competitively awarded schedule contract with fixed labor rates and is available to all federal agencies and their approved contractors. The fixed hourly rates have already been determined "fair and reasonable." Each agency has contract procedures to follow when using this streamlined and simplified procurement process.

**Prices:** Hourly rates may be obtained by calling the Contract Administrator at: (256) 428-1209 or Visit Our Website: [www.ducommun.com/miltec](http://www.ducommun.com/miltec)

**Contract Period:** 28 Oct 1999 - 27 Oct 2014

### Contract Technical Support Areas Special Item Numbers (SIN):

|                                  |   |
|----------------------------------|---|
| SIN 871-1                        | Strategic Planning for Technology Programs/Activities |
| SIN 871-2                        | Concept Development and Requirements Analysis         |
| SIN 871-3                        | System Design, Engineering and Integration            |
| SIN 871-4                        | Test and Evaluation                                   |
| SIN 871-5                        | Integrated Logistics Support                          |
| SIN 871-6                        | Acquisition and Life Cycle Management                 |
| 871-1 (EE, ME); 871-1RC (EE, ME) |   |
| 871-2 (EE, ME); 871-2RC (EE, ME) |   |
| 871-3 (EE, ME); 871-3RC (EE, ME) |   |
| 871-4 (EE, ME); 871-4RC (EE, ME) |   |
| 871-5 (EE, ME); 871-5RC (EE, ME) |   |
| 871-6 (EE, ME); 871-6RC (EE, ME) |   |
| EE- Electrical Engineering       | ME – Mechanical Engineering                           |

**Maximum Order:** The maximum order is \$1,000,000 (unless negotiated otherwise)

**Minimum Order:** The minimum order is \$100

**Payment Terms:** Net 30

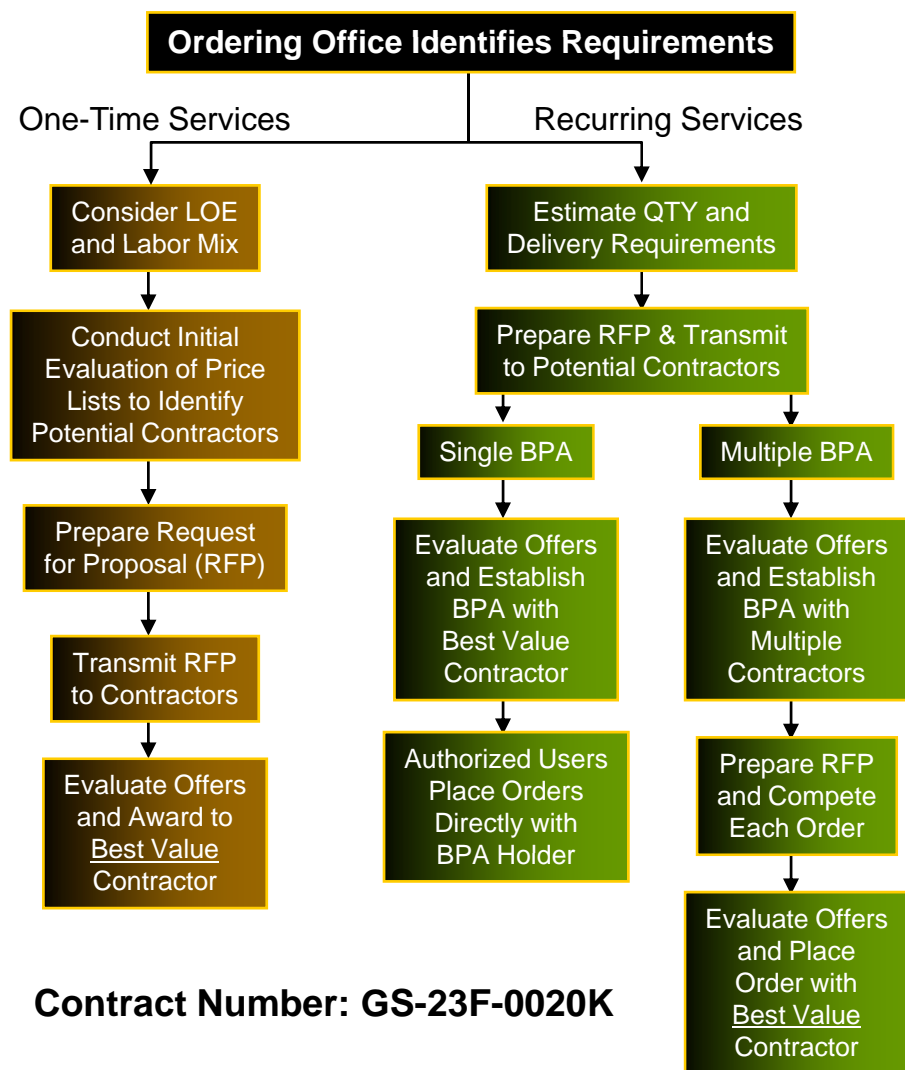
**Government Charge Card:** Accepted

### Payment Address:

Miltec Corporation  
ATTN: Accounts Payable  
678 Discovery Drive  
Huntsville, AL 35806



## PES Order Procedures



**Fast** - Task award accomplished in approximately 1 week

**Easy** - Streamlined process  
- Minimum paperwork and approvals

**Affordable** - Only 0.75% fee and the fee is included in rates