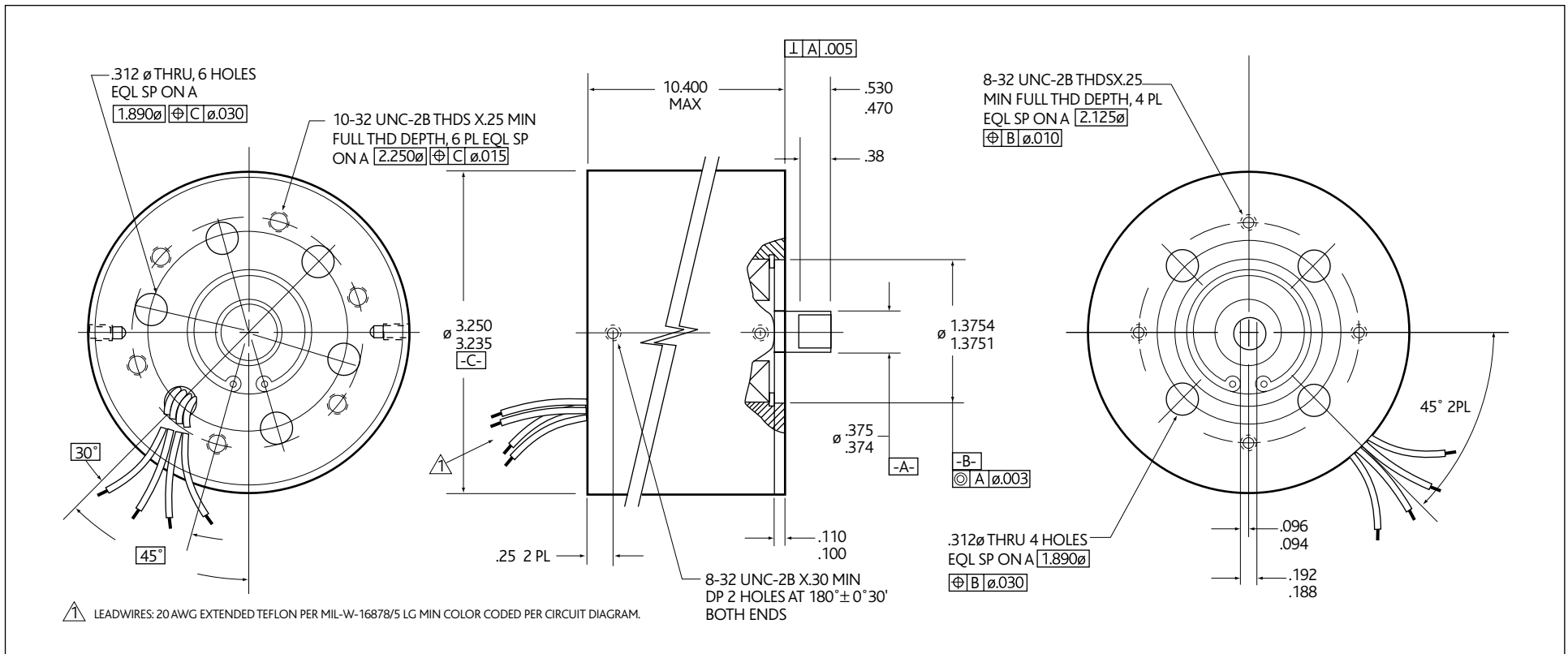


33HA14-1

AC INDUCTION MOTOR FOR DOWN HOLE APPLICATIONS



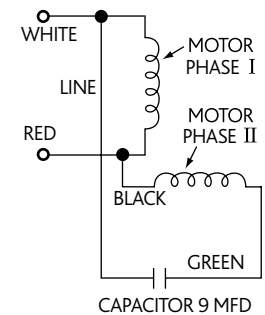
PERFORMANCE DATA (ROOM AMBIENT)

NUMBER OF PHASES	1
LINE VOLTAGE (VRMS)	400
LINE FREQUENCY (Hz)	60
LINE VOLTAGE WAVE SHAPE	SINUSOIDAL
LINE VOLTAGE TOTAL HARMONICS DISTORTION (%MAX)	5
STARTING TORQUE (OZ-IN) (REP)	85
LINE CURRENT AT STARTING TORQUE (ARMS) (REP)	4.4
RUNNING TORQUE (OZ-IN)	340 ± 20%
SHAFT SPEED AT RUNNING TORQUE (RPM) (MIN)	3,000
LINE CURRENT AT RUNNING TORQUE (ARMS) (MAX)	3.0
DUTY CYCLE:	
INTERMITTENT, 5 MINUTES MAX "ON"	
FOLLOWED BY 5 MINUTES MIN "OFF" PERIOD	
EFFICIENCY (PERCENT) (MIN)	65
OUTPUT POWER (HP)	1 ± 10%

GENERAL DATA

SHAFT END PLAY CHECKED WITH AN 8LBS REVERSING GAGE LOAD	0.002/0.008
MAX TEMP DOWN HOLE	200°C
WEIGHT (LBS)	17
MAX PRESSURE (PSI)	20,000

CIRCUIT DIAGRAM



CCW ROTATION VIEWING THE MOTOR FROM SHAFT END.
 FOR CW ROTATION REVERSE WHITE AND RED LEADS
 (WHITE TO BLACK AND RED TO CAPACITOR LEAD).
 CAPACITOR NOT SUPPLIED WITH MOTOR.