

REVISIONS				
ZONE	LTR	DESCRIPTION	DATE	APPROVED
		NO PRODUCTION RELEASE	9/16/82	KW

ELECTRICAL DATA

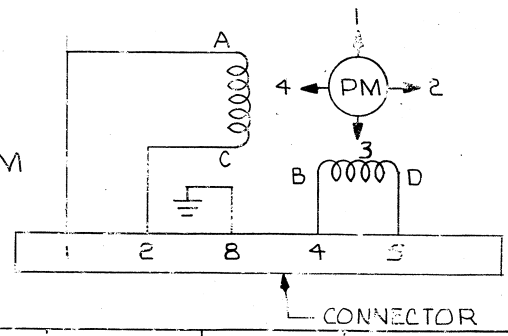
STEP ANGLE (DEGREES)	-----	1.8
VOLTAGE (VDC)	-----	22-29
RESISTANCE PER PHASE (OHMS) (±2)	-----	60
INDUCTANCE PER PHASE (MILLIHERTZ) (±10%)	-----	120
TORQUE (OZ IN) (MIN)	-----	30 @ 160 PPS
STALL TORQUE (OZ IN) (MIN)	-----	60.0
DETENT TORQUE (OZ IN) (MIN)	-----	8.0

GENERAL DATA

TEMPERATURE RANGE (DEGREES F)	-----	+10° TO +150° OPERATING
WEIGHT (LBS MAX)	-----	4.3

TWO-PHASE COMMUTATION SEQUENCE					
STEP	EXCITED WINDING				MOTION SEQUENCE VIEWED FROM SHAFT END
	A-C	B-D	C-A	D-B	
1	+	0	0	0	INDEX
2	0	+	0	0	CLOCKWISE
3	0	0	+	0	CLOCKWISE
4	0	0	0	+	CLOCKWISE

CIRCUIT DIAGRAM



3. LEADS TO BE 26 AWG PER TRW SPEC 3A018.
 2. ALL VALUES ARE NOMINAL AT ROOM AMBIENT (78° F).
 1. INTERPRET DRAWING IN ACCORDANCE WITH ANSI Y14.5
- NOTES: UNLESS OTHERWISE SPECIFIED

QTY REQD	SYM	NOMENCLATURE OR DESCRIPTION	CODE IDENT NO.	PART OR IDENTIFYING NO.	SPECIFICATION	MATERIAL OR NOTE	ZONE	ITEM NO.
LIST OF MATERIAL								
UNLESS OTHERWISE SPECIFIED DIMENSIONS ARE IN INCHES				DRAWN DBG 8/27/82				
TOLERANCES:				CHECK R.WEBB 9/10/82				
FRACTIONS DECIMALS ANGLES				ENGINEER [Signature] 9/10/82				
± .XX ± .01 ± 2°				APPROVED [Signature] 9/10/82				
.XXX ± .005				APPROVED [Signature] 9/10/82				
63 ALL MACHINED SURFACES REF. USAS 94B.1				APPROVED [Signature] 9/15/82				
MATERIAL:				SIZE CODE IDENT NO. DWG NO.				
FINISH:				C 29321 24TA3				
NEXT ASSY USED ON NEXT ASSY FINAL ASSY				APPROVED				
APPLICATION QTY REQD				SCALE / / SHEET OF				

AEI AMERICAN ELECTRONICS, INC.
1600 E. VALENCIA DRIVE FULLERTON, CALIF.

STEPPER MOTOR