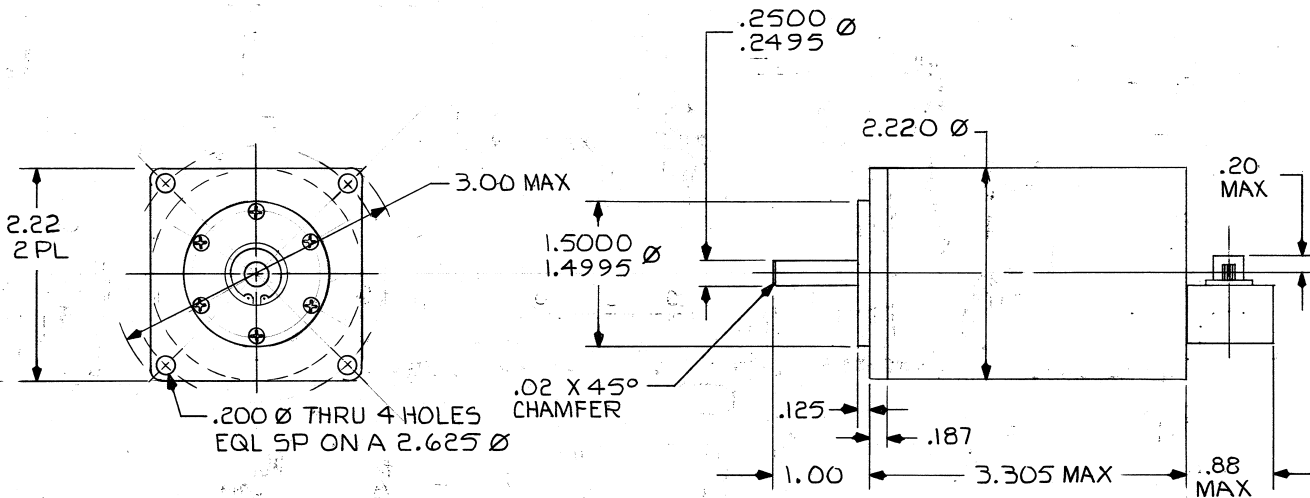


REVISIONS				
ZONE	LTR	DESCRIPTION	DATE	APPROVED
	NC	PRODUCTION RELEASE	7/10/82	KW
	A	REV PER ECD 33730	12-3-82	KW



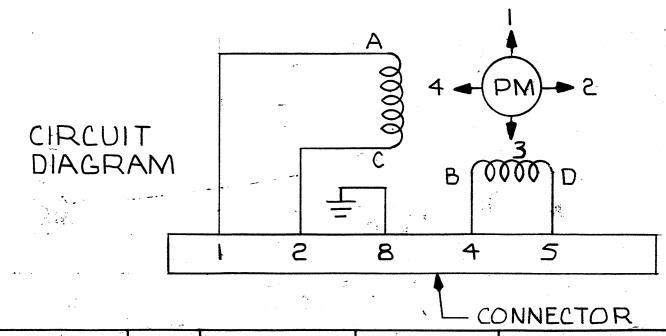
**ELECTRICAL DATA**

STEP ANGLE (DEGREES)	-----	1.8
VOLTAGE (VDC)	-----	22-29
RESISTANCE PER PHASE (OHMS)(±2)	-----	60
INDUCTANCE PER PHASE (MILLIHERTZ)(±1.0%)	-----	120
TORQUE (OZ IN)(MIN)	-----	30 @ 160 PPS
STALL TORQUE (OZ IN)(MIN)	-----	60.0
DETENT TORQUE (OZ IN)(MIN)	-----	8.0

**GENERAL DATA**

TEMPERATURE RANGE (DEGREES F)	-----	+10° TO +150° OPERATING
WEIGHT (LBS MAX)	-----	2.3

TWO-PHASE COMMUTATION SEQUENCE					
STEP	EXCITED WINDING				MOTION SEQUENCE VIEWED FROM SHAFT END
	A-C	B-D	C-A	D-B	
1	+	⊖	○	○	INDEX
2	○	+	⊖	○	CLOCKWISE
3	⊖	○	+	○	CLOCKWISE
4	○	○	⊖	+	CLOCKWISE



- LEADS TO BE 26 AWG PER TRW SPEC 3A018.
  - ALL VALUES ARE NOMINAL AT ROOM AMBIENT (78°F).
  - INTERPRET DRAWING IN ACCORDANCE WITH ANSI Y14.5
- NOTES: UNLESS OTHERWISE SPECIFIED

QTY REQD	SYM	NOMENCLATURE OR DESCRIPTION	CODE IDENT NO.	PART OR IDENTIFYING NO.	SPECIFICATION	MATERIAL OR NOTE	ZONE	ITEM NO.
LIST OF MATERIAL								
UNLESS OTHERWISE SPECIFIED DIMENSIONS ARE IN INCHES				<b>AEI</b> AMERICAN ELECTRONICS, INC. 1600 E. VALENCIA DRIVE, FULLERTON, CALIF.				
TOLERANCES:				DRAWN <b>DBG</b> 8/27/82 CHECK <b>R.WEBB</b> 7/10/82 ENGINEER <b>RW</b> 7/15/82 APPROVED <b>K. Walden</b> 7/10/82 APPROVED <b>GA</b> 7/15/82 APPROVED <b>DB</b> 7/15/82				
FRACTIONS DECIMALS ANGLES				TITLE				
± .xx ± .01 ± 2°				STEPPER MOTOR				
xxx ± .005				SIZE CODE IDENT NO. DWG NO. REV				
63 ALL MACHINED SURFACES REF. USAS B46.1				C 89321 24TA2 A				
MATERIAL:				SCALE 1/1 SHEET 1 OF 1				
FINISH:				REPLACES				
NEXT ASSY. USED ON NEXT ASSY. FINAL ASSY.				SIMILAR TO				
APPLICATION QTY REQD				W.O. NO. 58519-01				