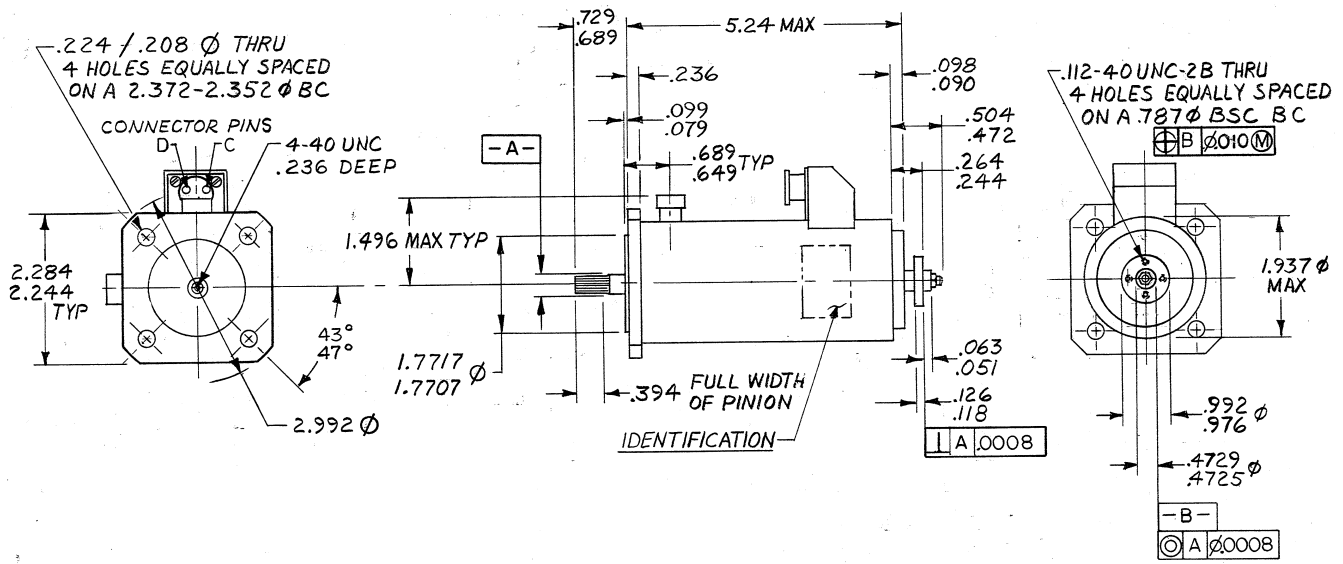
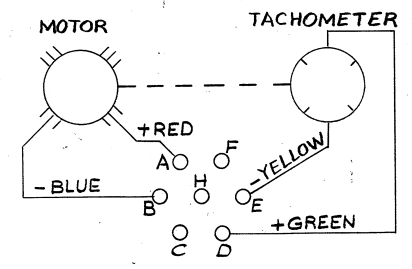


ZONE		LTR		REVISIONS	DESCRIPTION	DATE	APPROVED
NC				PRODUCTION RELEASE WITHOUT CHANGE PER ELO 33318	DC 9/23/81	10/5/81	KW



PERFORMANCE CHART							
TORQUE (IN-OZ)		RPM			AMPS		
MIN	NOM	MIN	NOM	MAX	NOM	MAX	
NO LOAD		2400	2500	3000	.45		
Δ27	27.8	1800	Δ2000	2200	2.4	2.64	
		112.0		STALL		9.0	
TACH OUTPUT: 10.0 VDC PER 1000 RPM							
TACH RIPPLE: 2% RMS MAXIMUM FOR SPEEDS ABOVE 200 RPM							
TACH RESISTANCE: 150 Ω ± 15%							

CIRCUIT DIAGRAM



ROTATION: CW VIEWED AT SHAFT END

GEAR DATA

TOOTH FORM PER AGMA	207.05
NO OF TEETH	15
PRESSURE ANGLE	20°
MODULE	0.5 MM
DIAMETRAL PITCH	50.80 REF
STD PITCH DIA	2953
CALC CIRCULAR TOOTH THICKNESS ON STD PITCH CIRCLE	.0331 NOM
GEAR TESTING RADIUS (PER AGMA 390.03)	.1509 MAX .1501 MIN
AGMA QUALITY NO	Q11C
TOTAL COMPOSITE TOL	.0007 MAX
TOOTH-TO-TOOTH COMPOSITE TOL	.0004 MAX
MASTER GEAR BSC CIRCULAR TOOTH THICKNESS ON STD PITCH CIRCLE	.0309 REF
MASTER GEAR NO TEETH	76 REF
TESTING PRESSURE	16 OZ
OUTSIDE DIA	3346-3336
O.D RUNOUT	.0015

- WEIGHT : 2.5 LBS.
- INSULATION RESISTANCE AT 500 VDC : 50 MEGOHMS MINIMUM BETWEEN WINDINGS AND HOUSING.
- DIELECTRIC WITHSTANDING VOLTAGE : 500 VRMS, 60 HZ FOR 1 MINUTE BETWEEN WINDINGS AND HOUSING.
- NAMEPLATE DATA : MODEL NO. 20DK1, SERIAL NO. CUSTOMER PART NO., AND DATA INDICATED. COVER WITH MIL-V-173 VARNISH

NOTES: UNLESS OTHERWISE SPECIFIED,

QTY REQD	SYM	NOMENCLATURE OR DESCRIPTION	CODE IDENT NO.	PART OR IDENTIFYING NO.	SPECIFICATION	MATERIAL OR NOTE	ZONE	ITEM NO.																				
LIST OF MATERIAL																												
UNLESS OTHERWISE SPECIFIED DIMENSIONS ARE IN INCHES TOLERANCES:				CONTRACT NO.																								
FRACTIONS DECIMALS ANGLES				DRAWN P. PFEFFER 2/19/76																								
± 1/64 .xx ± .01 ± 1/2				CHECK W. Floyd 5/5/76																								
.xxx ± .005				ENGINEER J. Lane 5/10/76																								
63 ALL MACHINED SURFACES REF. USAS B46.1				APPROVED																								
MATERIAL:				APPROVED																								
FINISH:				APPROVED																								
NEXT ASSY	USED ON	NEXT ASSY	FINAL ASSY	<table border="1"> <tr> <td colspan="2">AMERICAN ELECTRONICS, INC.</td> <td colspan="2">1600 E. VALENCIA DRIVE, FULLERTON, CALIF.</td> </tr> <tr> <td colspan="4">TITLE: DC MOTOR, TACHOMETER GENERATOR</td> </tr> <tr> <td>SIZE</td> <td>CODE IDENT NO.</td> <td>DWG NO.</td> <td>REV</td> </tr> <tr> <td>C</td> <td>89321</td> <td>20DK1</td> <td>NC</td> </tr> <tr> <td colspan="2">SCALE NONE</td> <td colspan="2">SHEET 1 OF 1</td> </tr> </table>					AMERICAN ELECTRONICS, INC.		1600 E. VALENCIA DRIVE, FULLERTON, CALIF.		TITLE: DC MOTOR, TACHOMETER GENERATOR				SIZE	CODE IDENT NO.	DWG NO.	REV	C	89321	20DK1	NC	SCALE NONE		SHEET 1 OF 1	
AMERICAN ELECTRONICS, INC.		1600 E. VALENCIA DRIVE, FULLERTON, CALIF.																										
TITLE: DC MOTOR, TACHOMETER GENERATOR																												
SIZE	CODE IDENT NO.	DWG NO.	REV																									
C	89321	20DK1	NC																									
SCALE NONE		SHEET 1 OF 1																										
APPLICATION		QTY REQD																										

SIMILAR TO

REPLACES

W.O. NO. 52118-01

20DK1 1/2