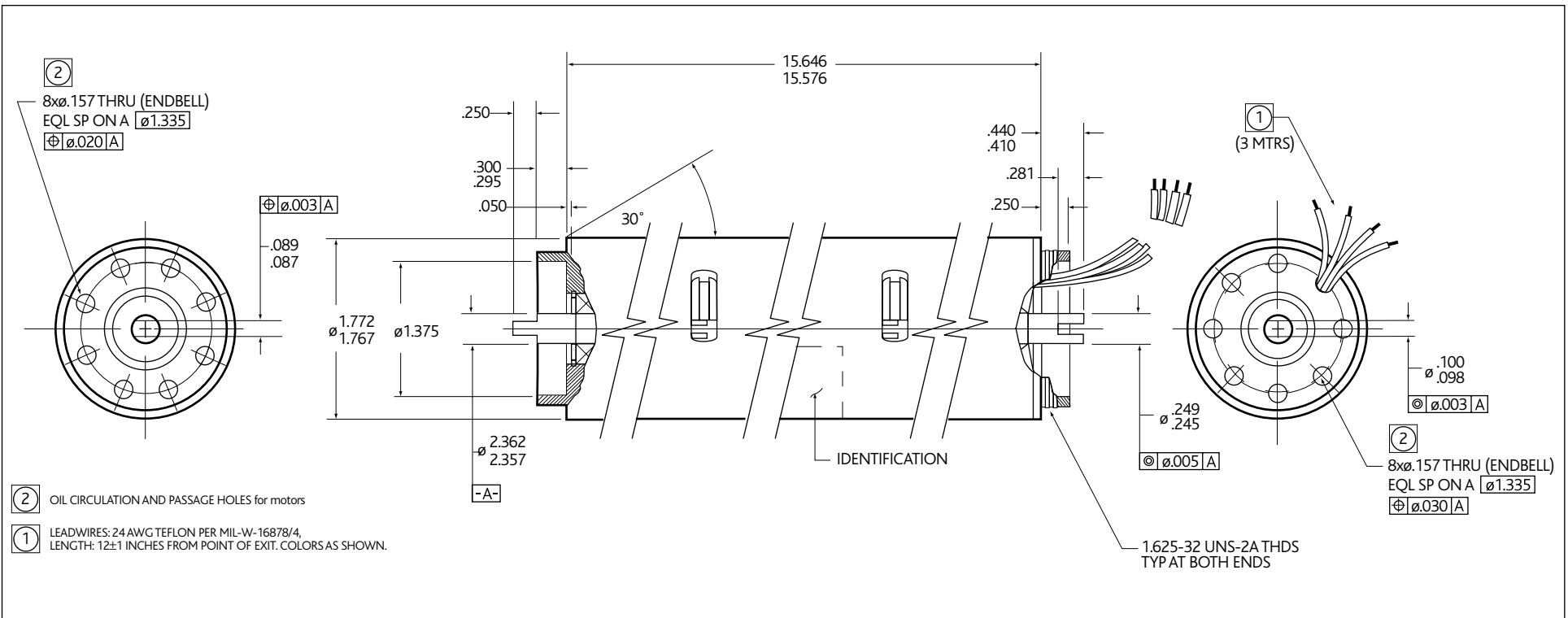


# 18HA9 AC INDUCTION MOTOR FOR DOWN HOLE APPLICATIONS



**ELECTRICAL AND PERFORMANCE DATA (ROOM AMBIENT)**

MOTOR TYPE: SINGLE PHASE, PERMANENT SPLIT CAPACITOR  
 (NOT SUPPLIED) REVERSIBLE, FOUR LEADS.  
 INPUT: LINE VOLTAGE (VRMS) .....400  
 LINE FREQUENCY (Hz) .....60  
 WAVE SHAPE (8% MAX TOTAL HARMONICS DISTORTION).....SINUSOIDAL  
 NO LOAD OPERATION AT 400V ±1V  
 CONTINUOUS RUNNING:  
 LINE CURRENT (AMPS)(MAX) .....0.825  
 SHAFT SPEED (RPM) .....3450±150  
 OPERATION UNDER LOAD:  
 TORQUE LOAD (±0.1 OZ-IN) .....54  
 CURRENT (±.05 AMPS) .....1.00  
 VOLTAGE.....ADJUSTED AS REQUIRED FOR LOAD AND CURRENT  
 POWER INPUT (LINE)(WATTS)(MAX) .....300  
 SHAFT SPEED (RPM)(MIN).....2,800

**GENERAL DATA**

OPERATING ENVIRONMENT:  
 TOTAL IMMERSION IN HYDRAULIC OIL PRESSURIZED UP TO 20,000 PSI AND HEATED UP TO 200°C

**WIRING DIAGRAM**

