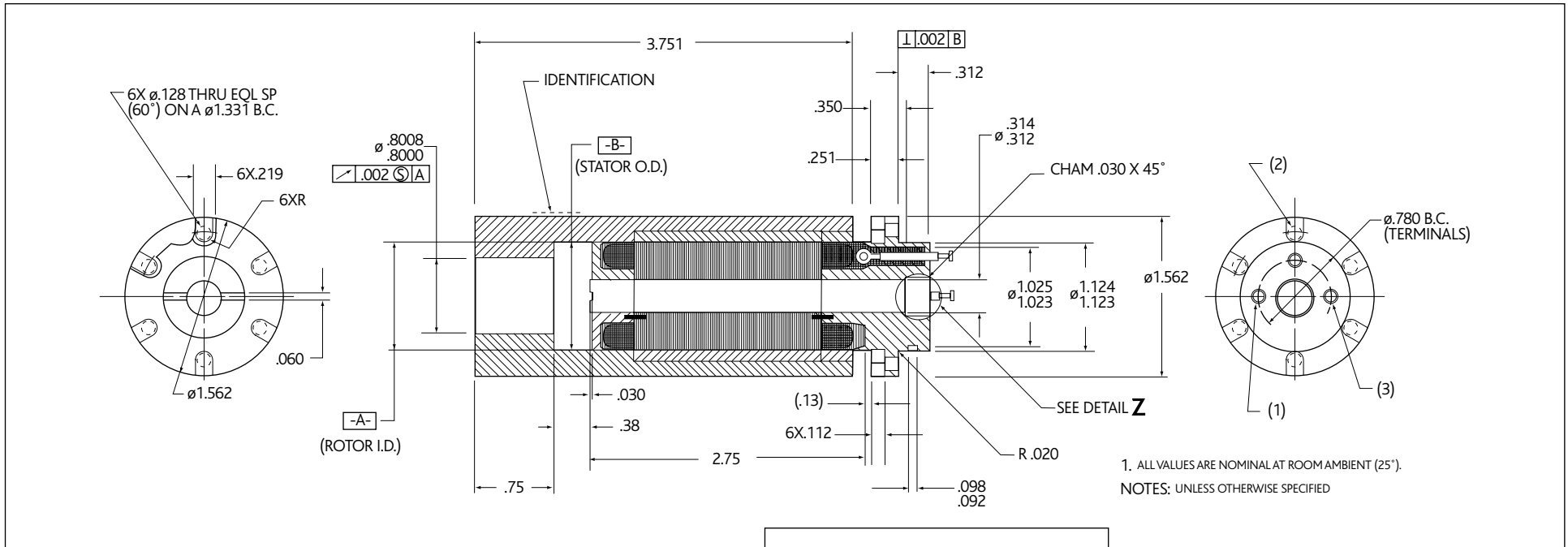


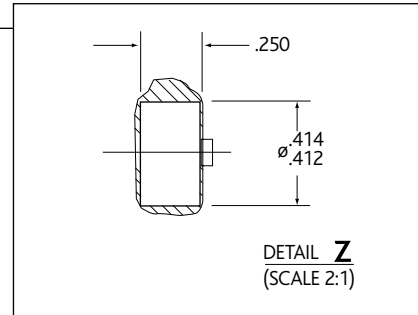
16 WP1

HIGH TEMPERATURE GENERATOR FOR DOWN HOLE APPLICATIONS



ELECTRICAL AND PERFORMANCE DATA (ROOM AMBIENT)

NUMBER OF PHASES	3
OUTPUT VOLTAGE(V _{RMS})(MAX) AT 3,000RPM, NO LOAD.....	48
OUTPUT VOLTAGE(V _{RMS})(MIN) AT 3,000RPM WITH 30 OHM RESISTOR LOAD.....	28
POWER OUTPUT AT 3,000 RPM (WATTS MIN AT P.F. = 1).....	50
DC WINDING RESISTANCE (OHMS).....	5.4± 10%
INDUCTANCE, STATOR (MH)	TDB



GENERAL DATA

ROTOR MOMENT OF INERTIA (OZ-IN)	19.2
OPERATING TEMPERATURE RANGE (°C)	0 TO 200
STATIC FRICTIONAL TORQUE (IN-OZ) AT +25±5°C (MAX)	12.0
DRIVING SPEED (RPM).....	3,000 TO 9,000
WEIGHT (OUNCES)(MAX)	30.0

