

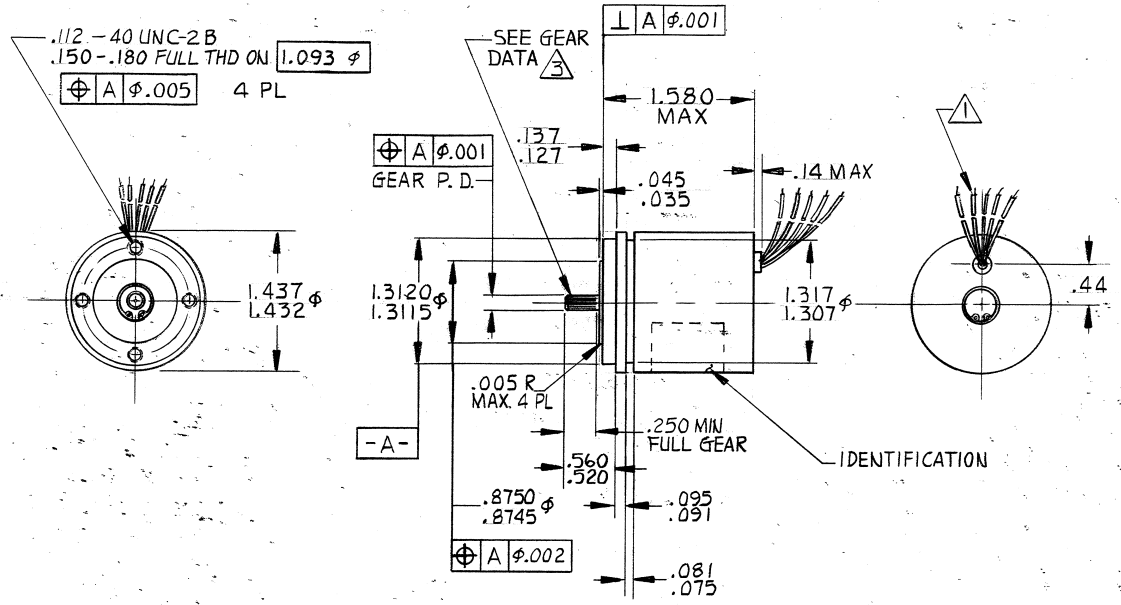
4

3

2

1

REVISIONS				
ZONE	LTR	DESCRIPTION	DATE	APPROVED
	NC	PRODUCTION RELEASE	7-19-65	<i>[Signature]</i>



PERFORMANCE DATA

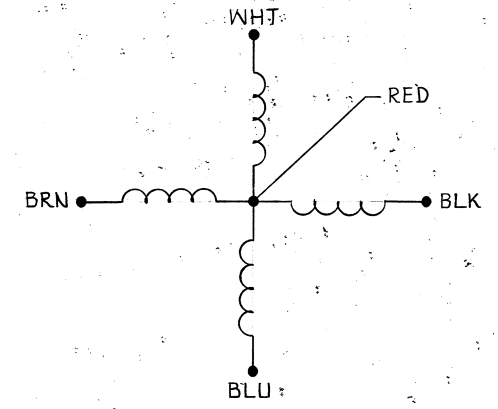
SEQUENTIAL STEPPING INFORMATION

CIRCUIT DIAGRAM

VOLTAGE (VDC) ----- 28
 DC RESISTANCE (OHMS @ 25°C) WITHOUT EXCITATION ----- 72 ± 10 %
 STEP ANGLE (DEGREES) ----- 45
 INPUT POWER (NOMINAL) ----- 11.0
 STALL TORQUE (IN-OZ) MIN. ----- 3.2
 STEP RATE (MIN) ----- 50 PPS
 DETENT TORQUE (IN-OZ) ----- 1.0 ± .4
 RUNNING TORQUE (IN-OZ) MIN. @ 25 PPS ----- 1.5
 INDUCTANCE (M.H. REF) ----- 41.0

UNIT TO STEP C.W. VIEWED FROM MOUNTING END WHEN STEPPED AS FOLLOWS:

STEP	LEAD	
1	WHT	RED
2	BLK	RED
3	BLU	RED
4	BRN	RED



GENERAL DATA

ROTOR MOMENT OF INERTIA (gm-cm²) ----- 5.0
 SHAFT RADIAL PLAY MEASURED 1/8 FROM BEARING WITH A 16 OZ REVERSING RADIAL LOAD APPLIED 1/4 FROM BEARING ----- .001 MAX
 SHAFT END PLAY MEASURED WITH A 16 OZ REVERSING AXIAL LOAD ----- .004 MAX
 TEMPERATURE RANGE (DEGREES F) ----- -80 TO +198
 WEIGHT (OUNCES, MAX) ----- 8.5

- 3. GEAR DATA AGMA QUAL (390.03) NO. 12 D NO. OF TEETH = 18, TEST RADIUS = .0771/.0763 DP = 120, PITCH DIA (REF) = .1500 PA = 20°, O.D. = .1708
- 2. ALL VALUES ARE NOMINAL AT ROOM AMBIENT (25°C). LEAD WIRES TO BE 28 AWG TEFLON COATED PER MIL-W-16878/6 (TYPE ET) 36 INCHES MIN. LENGTH (26 AWG ALT).

NOTES: UNLESS OTHERWISE SPECIFIED

QTY REQD	SYM	NOMENCLATURE OR DESCRIPTION	CODE IDENT NO.	PART OR IDENTIFYING NO.	SPECIFICATION	MATERIAL OR NOTE	ZONE	ITEM NO.
LIST OF MATERIAL								
UNLESS OTHERWISE SPECIFIED DIMENSIONS ARE IN INCHES				AEI AMERICAN ELECTRONICS, INC. 1600 E. VALENCIA DRIVE, FULLERTON, CALIF.				
TOLERANCES:				DRAWN <i>Ming</i> DATE 6/26/65 CHECK <i>DA</i> 7/19/65 ENGINEER <i>Wade</i> 7/19/65 APPROVED <i>D.R. Allen</i> 7/27/65 APPROVED <i>R. M. [Signature]</i> 7/19/65 APPROVED <i>[Signature]</i> 7/19/65				
FRACTIONS DECIMALS ANGLES				TITLE: STEPPER MOTOR DIRECT CURRENT				
± .XX ± .03 ± 1/2°				SIZE CODE IDENT NO. DWG NO. REV				
± .XXX ± .010				C 89321 15TA37 NC				
ALL MACHINED SURFACES REF. USAS B46.1				SCALE FULL SHEET 1 OF 1				
MATERIAL:				REPLACES W.O. NO.				
FINISH:				SIMILAR TO 15TA35				
NEXT ASSY	USED ON	NEXT ASSY	FINAL ASSY					
APPLICATION		QTY REQD						

15TA37 NC

A