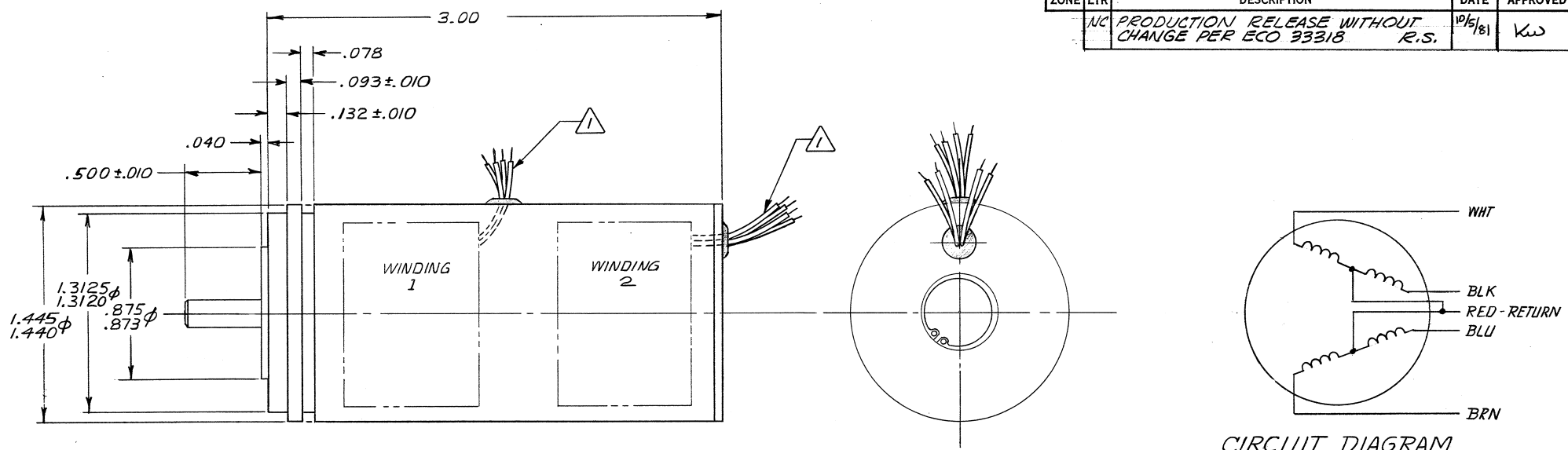


ZONE		LTR		REVISIONS	DESCRIPTION	DATE	APPROVED
NC				10/5/81	PRODUCTION RELEASE WITHOUT CHANGE PER ECO 33318 R.S.		KW



CIRCUIT DIAGRAM
TYP, WINDING 1 & WINDING 2

PERFORMANCE DATA

	(WINDING 1 OR 2)	(WINDING 1 & 2)
VOLTAGE (VDC)	28	28
DC RESISTANCE @ 25°C (OHMS)	72	
POWER @ 25°C (NOMINAL) (WATTS)	10.9	21.8
STEP ANGLE (DEGREES)	90	90
STALL TORQUE @ 28VDC (OZ-IN.)	3.2 MIN	6.4 MIN
RUNNING TORQUE @ 25 PPS, 28VDC (OZ-IN.)	1.6 MIN	3.2 MIN
DETENT TORQUE (OZ-IN.)	.6 MIN	.6 MIN

GENERAL DATA

ROTOR INERTIA (gr-cm ²)	5.8
SHAFT END PLAY MEASURED WITH A B OZ REVERSING AXIAL LOAD	.004 MAX
SHAFT RADIAL PLAY MEASURED 1/8" FROM BEARING WITH A 8 OZ REVERSING RADIAL LOAD	.001 MAX
SHAFT RUNOUT	.0008 MAX
WEIGHT (OZ)	12 MAX
TEMPERATURE	
OPERATING	+30°F To +100°F
NON-OPERATING	-150°F To +150°F

SEQUENTIAL STEPPING INFORMATION

UNIT TO STEP C.W. VIEWED FROM MOUNTING END WHEN CONNECTED AS FOLLOWS FOR WINDING 1 OR WINDING 2, OR WINDING 1 & 2 IN TANDEM.

STEP	WHT	BLK	BLU	BRN
1	+	○	○	○
2	○	+	○	○
3	○	○	+	○
4	○	○	○	+
1	+	○	○	○

LEADWIRES ARE 28 AWG TYPE E (TEFLON) PER MIL-W-16878/4, 24 IN. MIN LENGTH.
NOTES: UNLESS OTHERWISE SPECIFIED,

QTY REQD	SYM	NOMENCLATURE OR DESCRIPTION	CODE IDENT NO.	PART OR IDENTIFYING NO.	SPECIFICATION	MATERIAL OR NOTE	ZONE	ITEM NO.
LIST OF MATERIAL								
UNLESS OTHERWISE SPECIFIED DIMENSIONS ARE IN INCHES TOLERANCES: FRACTIONS DECIMALS ANGLES ± .XX ± .02 ± .XXX ± .005				CONTRACT NO.		AMERICAN ELECTRONICS, INC. T.M. 1600 E. VALENCIA DRIVE, FULLERTON, CALIF.		
ALL MACHINED SURFACES REF. USAS B46.1				DRAWN S. POHLEY DATE 10-24-77		TITLE OUTLINE STEPPER MOTOR (TANDEM)		
MATERIAL:				CHECK S. Clapton DATE 11-14-77				
FINISH:				ENGINEER [Signature] DATE 11/15/77		SIZE CODE IDENT NO. DWG NO.		
NEXT ASSY USED ON NEXT ASSY FINAL ASSY				APPROVED [Signature] DATE 11/17/77		C 89321 15TA32 NC		
APPLICATION QTY REQD				APPROVED		SCALE 2:1 SHEET 1 OF 1		

15 TA 32 NC