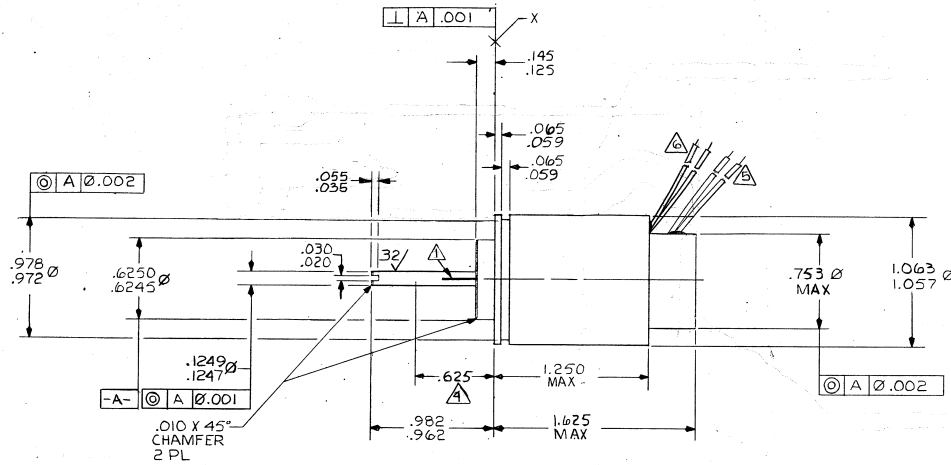
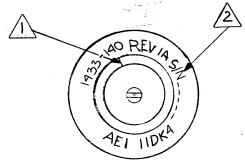


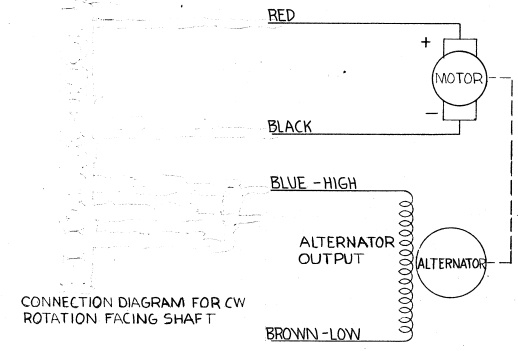
ZONE		REVISIONS		DATE	APPROVED
NC	LTR	RELEASE FOR PRODUCTION		5/2/78	[Signature]



GENERAL DATA
 UNIT WEIGHT (OZ MAX) ----- 5.5
 OPERATING TEMP RANGE (DEGREES C) ----- 55 TO +165

MOTOR PERFORMANCE CHART @ 25° ± 5° AMBIENT								
VDC	TORQUE, IN-OZ			RPM			AMPS	
	MIN	NCM	MAX	MIN	NOM	MAX	NOM	MAX
28	NO LOAD				10,700		.100	
28	.55			6800	8000	9200	.260	
24	.45			6000				
32	.20					12000		
28	1.40			STALL			POWER INPUT 20 WATTS MAX.	

ALTERNATOR PERFORMANCE @ 25° ± 5° C AMBIENT			
PHASES	1.0		
LOAD (PURE RESISTIVE OHMS ± 5%)	10,000		
FREQUENCY (CYCLES PER REVOLUTION)	1.0		
OUTPUT VOLTAGE AT 8000 RPM VOLTS P-P	18.64 ± 1.30V P-P		
TOTAL HARMONIC DISTORTION AT 8000 RPM	2% MAX		



- ⚠ MOTOR LEADS #24 AWG. PER MIL-W-16878/4 10" MIN. LONG.
- ⚠ ALTERNATOR LEADS #28 AWG PER MIL-W-16878/4, 10" MIN LONG.
- ⚠ RADIAL PLAY NOT TO EXCEED .0006 TOTAL AT .625 FROM SURFACE X WHEN SUBJECTED TO A RADIAL LOAD IN ANY DIRECTION OF 8 ± .5 OZ AT .625 FROM SURFACE X. SHAFT END PLAY: CONTROLLED BY SPRING LOADING (NO FREE PLAY) UNDER 1LB REVERSING GAUGE LOAD ----- .000 TO .005.
- 3. THE UNIT SHALL BE CAPABLE OF MEETING THE REQUIREMENTS OF THIS SPECIFICATION WHILE IMMERSSED IN A MAGNETIC FIELD OF 260 GAUSS.
- ⚠ UNIT TO BE PERMANENTLY MARKED IN AREA SHOWN.
- ⚠ SCRIBE LINES ON SHAFT AND HOUSING TO INDICATE POSITION CORRESPONDING TO MAX. ALTERNATOR OUTPUT (POSITIVE) DURING DYNAMIC OPERATION WITHIN 10° (FOR CW ROTATION) WHEN VIEWED FROM SHAFT END.

QTY REQD	SYM	NOMENCLATURE OR DESCRIPTION	CODE IDENT NO.	PART OR IDENTIFYING NO.	SPECIFICATION	MATERIAL OR NOTE	ZONE	ITEM NO.
LIST OF MATERIAL								
UNLESS OTHERWISE SPECIFIED DIMENSIONS ARE IN INCHES				DRAWN M.J.GOMEZ 5/7/78				
TOLERANCES				CHECKED [Signature] 5/13/78				
FRACTIONS DECIMALS ANGLES				ENGINEER [Signature] 5/16/78				
± XX ± .01 ± 0°30				APPROVED [Signature] 5/22/78				
XXX ± .005				APPROVED [Signature] 5/24/78				
✓ ALL MACHINED SURFACES REF. USAS 98-1				APPROVED [Signature] 5/24/78				
MATERIAL:				APPROVED [Signature] 5/24/78				
NEXT ASSY USED ON NEXT ASSY FROM ASSY				APPROVED [Signature] 5/24/78				
FINISH:				APPROVED [Signature] 5/24/78				
APPLICATION QTY REQD				SIZE CODE IDENT NO. DWG NO.				
				D 89321 11DK4				
				SCALE 2/1 SHEET 1 OF 1				

AEI AMERICAN ELECTRONICS, INC.
 1600 E. VALENCIA DRIVE, FULLERTON, CALIF.

D C MOTOR - ALTERNATOR

REV NC